



ELECTRONIC COPY

LG765628554
Report verification at igi.org



February 28, 2026
IGI Report Number **LG765628554**
Description **LABORATORY GROWN DIAMOND**
Shape and Cutting Style **HALF MOON MODIFIED BRILLIANT**
Measurements **13.24 X 4.92 X 3.08 MM**
GRADING RESULTS
Carat Weight **1.33 CARAT**
Color Grade **FANCY VIVID GREEN**
Clarity Grade **VVS 2**

LABORATORY GROWN DIAMOND REPORT

February 28, 2026
IGI Report Number **LG765628554**
Description **LABORATORY GROWN DIAMOND**
Shape and Cutting Style **HALF MOON MODIFIED BRILLIANT**
Measurements **13.24 X 4.92 X 3.08 MM**

GRADING RESULTS

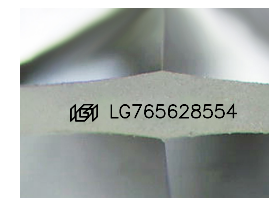
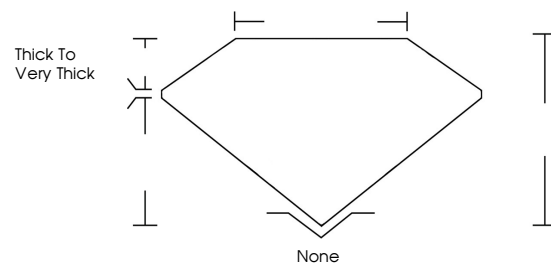
Carat Weight **1.33 CARAT**
Color Grade **FANCY VIVID GREEN**
Clarity Grade **VVS 2**

ADDITIONAL GRADING INFORMATION

Polish **EXCELLENT**
Symmetry **EXCELLENT**
Fluorescence **VERY SLIGHT**
Inscription(s) **IGI LG765628554**

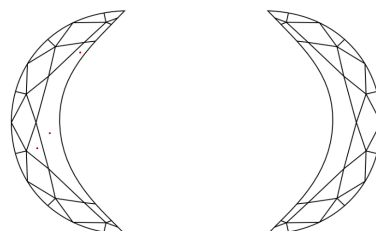
Comments: This Laboratory Grown Diamond was created by Chemical Vapor Deposition (CVD) growth process.
Indications of post-growth treatment.

PROPORTIONS



Sample Image Used

CLARITY CHARACTERISTICS



KEY TO SYMBOLS

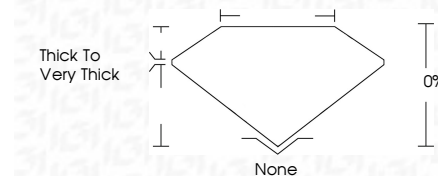
Red symbols indicate internal characteristics.
Green symbols indicate external characteristics.

COLOR

D E F G H I J Faint Very Light Light

CLARITY

FL	IF	VVS ¹⁻²	VS ¹⁻²	SI ¹⁻²	I ¹⁻³
Flawless	Internally Flawless	Very Very Slightly Included	Very Slightly Included	Slightly Included	Included



ADDITIONAL GRADING INFORMATION

Polish **EXCELLENT**
Symmetry **EXCELLENT**
Fluorescence **VERY SLIGHT**
Inscription(s) **IGI LG765628554**
Comments: This Laboratory Grown Diamond was created by Chemical Vapor Deposition (CVD) growth process.
Indications of post-growth treatment.



February 28, 2026
IGI Report No **LG765628554**
HALF MOON MODIFIED BRILLIANT
1.33 CARAT
FANCY VIVID GREEN
VVS 2
None
EXCELLENT
EXCELLENT
VERY SLIGHT
IGI LG765628554
None
EXCELLENT
EXCELLENT
VERY SLIGHT
IGI LG765628554
Comments: This Laboratory Grown Diamond was created by Chemical Vapor Deposition (CVD) growth process.
Indications of post-growth treatment.