



ELECTRONIC COPY

LG765628531
Report verification at igi.org



January 23, 2026
IGI Report Number **LG765628531**
Description **LABORATORY GROWN DIAMOND**
Shape and Cutting Style **SQUARE CUSHION MODIFIED BRILLIANT**
Measurements **7.21 X 6.92 X 4.56 MM**
GRADING RESULTS
Carat Weight **2.09 CARATS**
Color Grade **FANCY DEEP PINK**
Clarity Grade **VS 1**

LABORATORY GROWN DIAMOND REPORT

January 23, 2026
IGI Report Number **LG765628531**
Description **LABORATORY GROWN DIAMOND**
Shape and Cutting Style **SQUARE CUSHION MODIFIED BRILLIANT**
Measurements **7.21 X 6.92 X 4.56 MM**

GRADING RESULTS

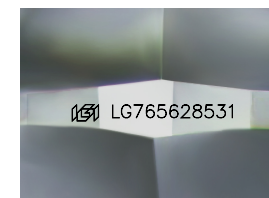
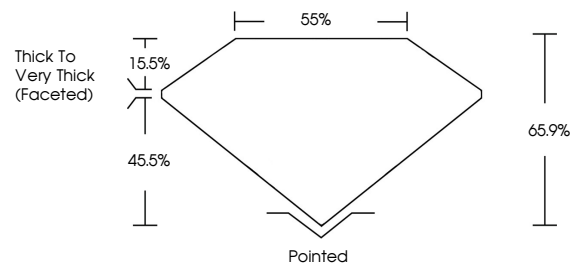
Carat Weight **2.09 CARATS**
Color Grade **FANCY DEEP PINK**
Clarity Grade **VS 1**

ADDITIONAL GRADING INFORMATION

Polish **EXCELLENT**
Symmetry **EXCELLENT**
Fluorescence **SLIGHT**
Inscription(s) **IGI LG765628531**

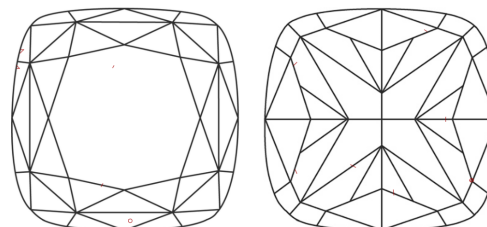
Comments: This Laboratory Grown Diamond was created by Chemical Vapor Deposition (CVD) growth process. Indications of post-growth treatment.

PROPORTIONS



Sample Image Used

CLARITY CHARACTERISTICS



KEY TO SYMBOLS

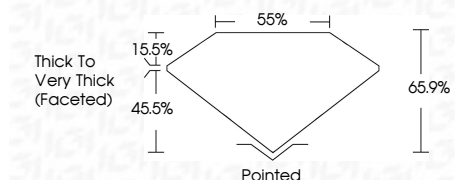
Red symbols indicate internal characteristics.
Green symbols indicate external characteristics.

COLOR

D E F G H I J Faint Very Light Light

CLARITY

FL	IF	VS ¹⁻²	VS ¹⁻²	SI ¹⁻²	I ¹⁻³
Flawless	Internally Flawless	Very Very Slightly Included	Very Slightly Included	Slightly Included	Included



ADDITIONAL GRADING INFORMATION

Polish **EXCELLENT**
Symmetry **EXCELLENT**
Fluorescence **SLIGHT**
Inscription(s) **IGI LG765628531**
Comments: This Laboratory Grown Diamond was created by Chemical Vapor Deposition (CVD) growth process. Indications of post-growth treatment.



January 23, 2026
IGI Report No **LG765628531**
SQUARE CUSHION MODIFIED BRILLIANT
2.09 CARATS
Carat Weight **FANCY DEEP PINK**
Color Grade **VS 1**
Clarity Grade **65.9%**
Depth **55%**
Table **Thick to Very Thick (Faceted)**
Girdle **Pointed**
Culet **EXCELLENT**
Polish **EXCELLENT**
Symmetry **EXCELLENT**
Fluorescence **SLIGHT**
Inscription(s) **IGI LG765628531**
Comments: This Laboratory Grown Diamond was created by Chemical Vapor Deposition (CVD) growth process. Indications of post-growth treatment.