



ELECTRONIC COPY

LG765628529 Report verification at igi.org



January 24, 2026

IGI Report Number LG765628529

Description LABORATORY GROWN DIAMOND

Shape and Cutting Style CUT CORNERED RECTANGULAR MODIFIED BRILLIANT

Measurements 10.10 X 6.90 X 4.72 MM

GRADING RESULTS

Carat Weight 2.98 CARATS

Color Grade FANCY VIVID PINK

Clarity Grade VS 1

LABORATORY GROWN DIAMOND REPORT

January 24, 2026

IGI Report Number LG765628529

Description LABORATORY GROWN DIAMOND

Shape and Cutting Style CUT CORNERED RECTANGULAR MODIFIED BRILLIANT

Measurements 10.10 X 6.90 X 4.72 MM

GRADING RESULTS

Carat Weight 2.98 CARATS

Color Grade FANCY VIVID PINK

Clarity Grade VS 1

ADDITIONAL GRADING INFORMATION

Polish VERY GOOD

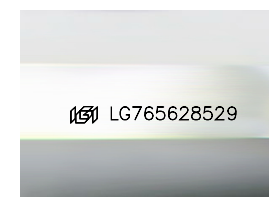
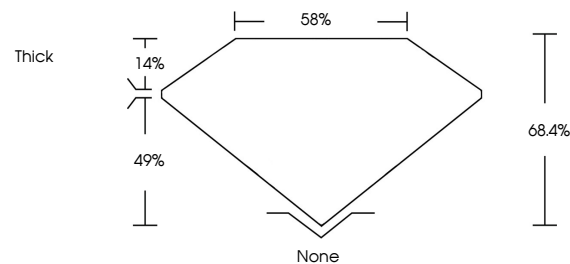
Symmetry EXCELLENT

Fluorescence SLIGHT

Inscription(s) IGI LG765628529

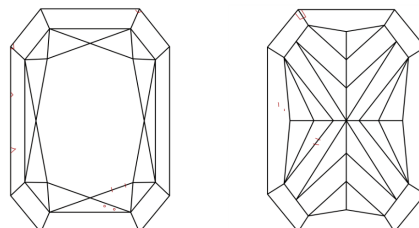
Comments: This Laboratory Grown Diamond was created by Chemical Vapor Deposition (CVD) growth process. Indications of post-growth treatment.

PROPORTIONS



Sample Image Used

CLARITY CHARACTERISTICS



KEY TO SYMBOLS

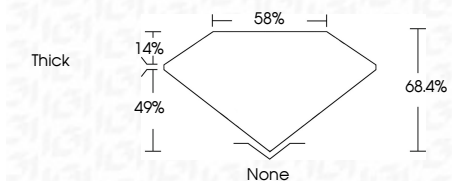
Red symbols indicate internal characteristics. Green symbols indicate external characteristics.

COLOR

D E F G H I J Faint Very Light Light

CLARITY

FL IF VS 1-2 VS 2-2 SI 1-2 I 1-3 Flawless Internally Flawless Very Very Slightly Included Very Slightly Included Slightly Included Included



ADDITIONAL GRADING INFORMATION

Polish VERY GOOD

Symmetry EXCELLENT

Fluorescence SLIGHT

Inscription(s) IGI LG765628529

Comments: This Laboratory Grown Diamond was created by Chemical Vapor Deposition (CVD) growth process. Indications of post-growth treatment.



IGI



January 24, 2026 IGI Report No LG765628529 CUT CORNERED RECT. MODIFIED BRILLIANT 10.10 X 6.90 X 4.72 MM 2.98 CARATS FANCY VIVID PINK VS 1 68.4% 58% Thick None Polish VERY GOOD EXCELLENT SLIGHT Fluorescence SLIGHT Inscription(s) IGI LG765628529 Comments: This Laboratory Grown Diamond was created by Chemical Vapor Deposition (CVD) growth process. Indications of post-growth treatment.