



**ELECTRONIC COPY**

LG765628439  
Report verification at igi.org



January 21, 2026

IGI Report Number **LG765628439**

Description **LABORATORY GROWN DIAMOND**

Shape and Cutting Style **EMERALD CUT**

Measurements **8.83 X 5.79 X 3.79 MM**

**GRADING RESULTS**

Carat Weight **2.00 CARATS**

Color Grade **FANCY INTENSE PINK**

Clarity Grade **VS 2**

January 21, 2026  
IGI Report Number **LG765628439**  
Description **LABORATORY GROWN DIAMOND**  
Shape and Cutting Style **EMERALD CUT**  
Measurements **8.83 X 5.79 X 3.79 MM**

**GRADING RESULTS**

Carat Weight **2.00 CARATS**

Color Grade **FANCY INTENSE PINK**

Clarity Grade **VS 2**

**ADDITIONAL GRADING INFORMATION**

Polish **EXCELLENT**

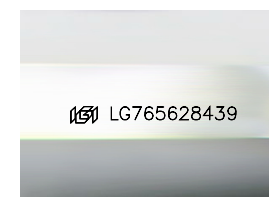
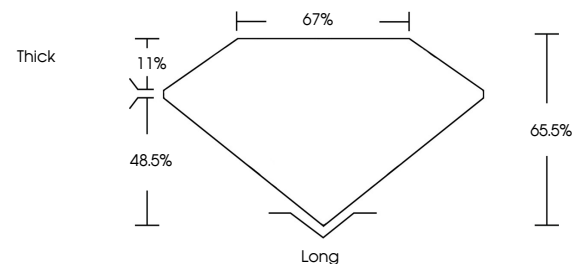
Symmetry **EXCELLENT**

Fluorescence **SLIGHT**

Inscription(s) **LG765628439**

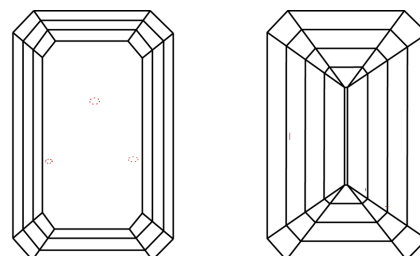
Comments: This Laboratory Grown Diamond was created by Chemical Vapor Deposition (CVD) growth process.  
Indications of post-growth treatment.

**PROPORTIONS**



Sample Image Used

**CLARITY CHARACTERISTICS**



**KEY TO SYMBOLS**

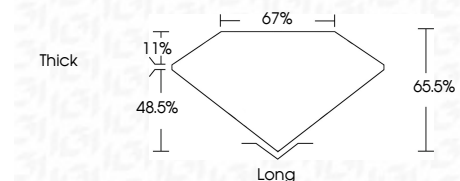
Red symbols indicate internal characteristics.  
Green symbols indicate external characteristics.

**COLOR**

D E F G H I J Faint Very Light Light

**CLARITY**

FL	IF	VS <sup>1-2</sup>	VS <sup>1-2</sup>	SI <sup>1-2</sup>	I <sup>1-3</sup>
Flawless	Internally Flawless	Very Very Slightly Included	Very Slightly Included	Slightly Included	Included



**ADDITIONAL GRADING INFORMATION**

Polish **EXCELLENT**

Symmetry **EXCELLENT**

Fluorescence **SLIGHT**

Inscription(s) **LG765628439**

Comments: This Laboratory Grown Diamond was created by Chemical Vapor Deposition (CVD) growth process.  
Indications of post-growth treatment.



January 21, 2026  
IGI Report No **LG765628439**  
**EMERALD CUT**

**2.00 CARATS**  
Carat Weight  
**FANCY INTENSE PINK**  
Color Grade

**VS 2**  
Clarity Grade  
**65.5%**  
Depth  
**67%**  
Table  
**Thick**  
Girdle

**Long**  
Culet  
**EXCELLENT**  
Polish  
**EXCELLENT**  
Symmetry  
**SLIGHT**  
Fluorescence  
**IGI LG765628439**  
Inscription(s)

Comments: This Laboratory Grown Diamond was created by Chemical Vapor Deposition (CVD) growth process.  
Indications of post-growth treatment.