



ELECTRONIC COPY

LG765625143
Report verification at igi.org



January 13, 2026

IGI Report Number **LG765625143**

Description **LABORATORY GROWN DIAMOND**

Shape and Cutting Style **MARQUISE BRILLIANT**

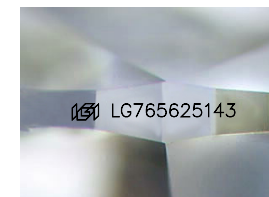
Measurements **15.58 X 7.50 X 4.56 MM**

GRADING RESULTS

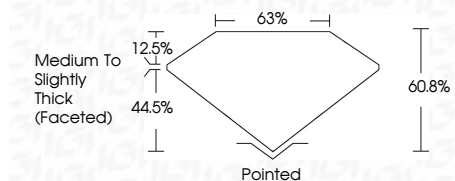
Carat Weight **3.02 CARATS**

Color Grade **F**

Clarity Grade **VVS 2**



Sample Image Used



ADDITIONAL GRADING INFORMATION

Polish **EXCELLENT**

Symmetry **EXCELLENT**

Fluorescence **NONE**

Inscription(s) **IGI LG765625143**

Comments: This Laboratory Grown Diamond was created by Chemical Vapor Deposition (CVD) growth process. Type IIa



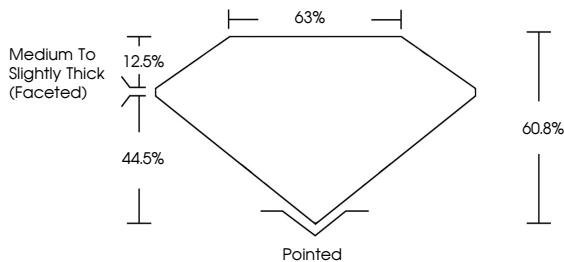
January 13, 2026	IGI Report No LG765625143	3.02 CARATS	F
MARQUISE BRILLIANT		VVS 2	60.8%
15.58 X 7.50 X 4.56 MM		63%	Medium to Slightly Thick (Faceted)
Color Grade		Pointed	
Clarity Grade		EXCELLENT	
Depth		EXCELLENT	
Table		NONE	
Grafs		INSRIPTION(S)	
Culet		IGI LG765625143	
Polish			
Symmetry			
Fluorescence			
Inscription(s)			

Comments: This Laboratory Grown Diamond was created by Chemical Vapor Deposition (CVD) growth process. Type IIa

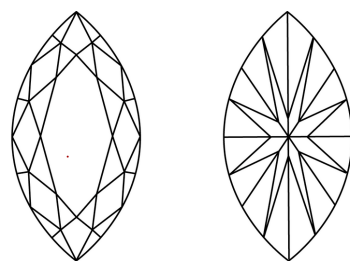
January 13, 2026
IGI Report Number **LG765625143**
Description **LABORATORY GROWN DIAMOND**
Shape and Cutting Style **MARQUISE BRILLIANT**
Measurements **15.58 X 7.50 X 4.56 MM**
GRADING RESULTS
Carat Weight **3.02 CARATS**
Color Grade **F**
Clarity Grade **VVS 2**
ADDITIONAL GRADING INFORMATION
Polish **EXCELLENT**
Symmetry **EXCELLENT**
Fluorescence **NONE**
Inscription(s) **IGI LG765625143**

Comments: This Laboratory Grown Diamond was created by Chemical Vapor Deposition (CVD) growth process. Type IIa

PROPORTIONS



CLARITY CHARACTERISTICS



KEY TO SYMBOLS

Red symbols indicate internal characteristics.
Green symbols indicate external characteristics.

COLOR

D	E	F	G	H	I	J	Faint	Very Light	Light
---	---	---	---	---	---	---	-------	------------	-------

CLARITY

FL	IF	VVS ¹⁻²	VS ¹⁻²	SI ¹⁻²	I ¹⁻³
Flawless	Internally Flawless	Very Very Slightly Included	Very Slightly Included	Slightly Included	Included

