



**ELECTRONIC COPY**

## LABORATORY GROWN DIAMOND REPORT

|                         |                          |
|-------------------------|--------------------------|
| January 13, 2026        |                          |
| IGI Report Number       | LG765624362              |
| Description             | LABORATORY GROWN DIAMOND |
| Shape and Cutting Style | ROUND BRILLIANT          |
| Measurements            | 8.16 - 8.20 X 5.03 MM    |

## GRADING RESULTS

|               |             |
|---------------|-------------|
| Carat Weight  | 2.07 CARATS |
| Color Grade   | D           |
| Clarity Grade | VVS 1       |
| Cut Grade     | IDEAL       |

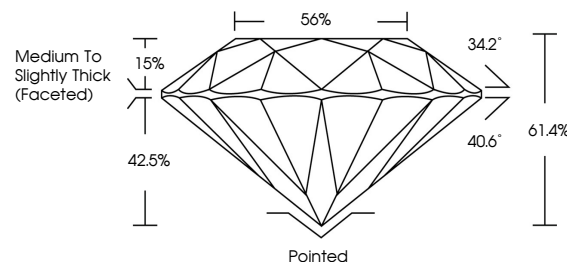
### ADDITIONAL GRADING INFORMATION

|                |                |
|----------------|----------------|
| Polish         | EXCELLENT      |
| Symmetry       | EXCELLENT      |
| Fluorescence   | NONE           |
| Inscription(s) | 15 LG765624362 |

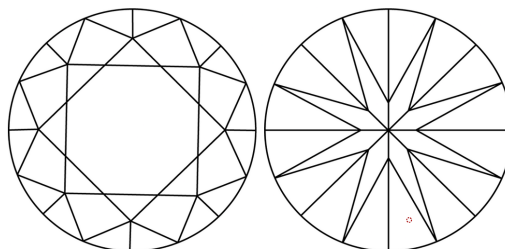
Comments: As Grown - No indication of post-growth treatment.  
This Laboratory Grown Diamond was created by High Pressure High Temperature (HPHT) growth process.  
Type II

LG765624362  
Report verification at [lgi.org](https://lgi.org)

## PROPORTIONS

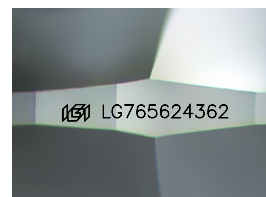


## CLARITY CHARACTERISTICS



## KEY TO SYMBOLS

Red symbols indicate internal characteristics.  
Green symbols indicate external characteristics.



Sample Image Used

## COLOR

D E F G H I J Faint Very Light Light

## CLARITY

| FL       | IF                  | VVS <sup>1-2</sup>          | VS <sup>1-2</sup>      | SI <sup>1-2</sup> | I <sup>1-3</sup> |
|----------|---------------------|-----------------------------|------------------------|-------------------|------------------|
| Flawless | Internally Flawless | Very Very Slightly Included | Very Slightly Included | Slightly Included | Included         |

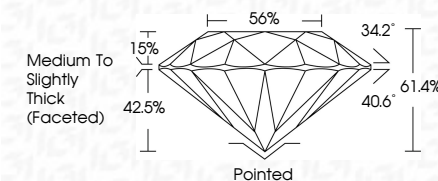
## LABORATORY GROWN DIAMOND REPORT



|                         |                          |
|-------------------------|--------------------------|
| January 13, 2026        |                          |
| IGI Report Number       | LG765624362              |
| Description             | LABORATORY GROWN DIAMOND |
| Shape and Cutting Style | ROUND BRILLIANT          |
| Measurements            | 8.16 - 8.20 X 5.03 MM    |

## GRADING RESULTS

|               |             |
|---------------|-------------|
| Carat Weight  | 2.07 CARATS |
| Color Grade   | D           |
| Clarity Grade | VVS 1       |
| Cut Grade     | IDEAL       |



### ADDITIONAL GRADING INFORMATION

|  |                            |
|--|----------------------------|
| Polish   | EXCELLENT                  |
| Symmetry   | EXCELLENT                  |
| Fluorescence   | NONE                       |
| Inscription(s)   | <del>(G)</del> LG765624362 |
| Comments: As Grown - No indication of post-growth treatment.                                       |                            |
| This Laboratory Grown Diamond was created by High Pressure High Temperature (HPHT) growth process. |                            |
| Type II  |                            |



© IGI 2020, International Gemological Institute

FD - 10 20



THIS DOCUMENT WAS PRODUCED WITH THE FOLLOWING SECURITY MEASURES: SPECIAL DOCUMENT PAPER, INK SCREENS, WATERMARK, BACKGROUND DESIGNS, HOLOGRAM AND OTHER SECURITY FEATURES NOT LISTED AND DO EXCEED DOCUMENT SECURITY INDUSTRY GUIDELINES

**www.igi.org**

|  |                                   |                  |
|--|-----------------------------------|------------------|
|  |                                   | January 13, 2026 |
| Gf Report No.  | L7/6592/8342                      |                  |
| <b>ROUND BRILLANT</b>  |                                   |                  |
| Weight   | 1.16 - 1.20 X .53 MM              |                  |
| Carat Weight   |                                   |                  |
| Color Grade  | VVS 1                             | D                |
| Clarity Grade  | IDeal                             | 2/IT CARATS      |
| Cut Grade  | 61.4%                             |                  |
| Depth  | 56%                               |                  |
| Table  | Medium to Slightly Thick Faceted) |                  |
| Girdle   | Poited                            |                  |
|  | B'CELENT                          |                  |
| Symmetry   | B'CELENT                          |                  |
| Fluorescence   | NONE                              |                  |
| Inscriptions   | #G1 L67/6592/8342                 |                  |
| Comments:  |                                   |                  |
| No indication of post-growth treatment.  |                                   |                  |
| This Laboratory Grown Diamond was created by High Pressure High temperature (HPHT) growth process. |                                   |                  |
| Type II  |                                   |                  |