



INTERNATIONAL GEMOLOGICAL INSTITUTE

ELECTRONIC COPY

LABORATORY GROWN DIAMOND REPORT

January 12, 2026
IGI Report Number **LG765618218**
Description **LABORATORY GROWN DIAMOND**
Shape and Cutting Style **ROUND BRILLIANT**
Measurements **3.99 - 4.03 X 2.44 MM**

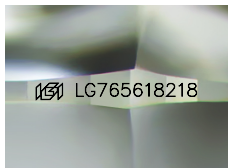
GRADING RESULTS

Carat Weight **0.24 CARAT**
Color Grade **D**
Clarity Grade **VVS 2**
Cut Grade **IDEAL**

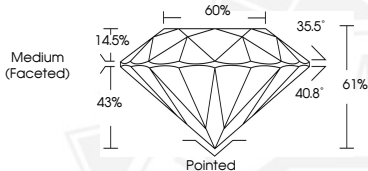
ADDITIONAL GRADING INFORMATION

Polish **EXCELLENT**
Symmetry **EXCELLENT**
Fluorescence **NONE**
Inscription(s) **IGI LG765618218**

Comments: This Laboratory Grown Diamond was created by Chemical Vapor Deposition (CVD) growth process. Type IIa



Sample Image Used



January 12, 2026
IGI Report Number **LG765618218**
ROUND BRILLIANT
LABORATORY GROWN DIAMOND
3.99 - 4.03 X 2.44 MM
Carat Weight **0.24 CARAT**
Color Grade **D**
Clarity Grade **VVS 2**
Cut Grade **IDEAL**
Polish **EXCELLENT**
Symmetry **EXCELLENT**
Fluorescence **NONE**
Inscription(s) **IGI LG765618218**
Comments: This Laboratory Grown Diamond was created by Chemical Vapor Deposition (CVD) growth process. Type IIa



January 12, 2026
IGI Report Number **LG765618218**
ROUND BRILLIANT
LABORATORY GROWN DIAMOND
3.99 - 4.03 X 2.44 MM
Carat Weight **0.24 CARAT**
Color Grade **D**
Clarity Grade **VVS 2**
Cut Grade **IDEAL**
Polish **EXCELLENT**
Symmetry **EXCELLENT**
Fluorescence **NONE**
Inscription(s) **IGI LG765618218**
Comments: This Laboratory Grown Diamond was created by Chemical Vapor Deposition (CVD) growth process. Type IIa



THIS DOCUMENT WAS PRODUCED WITH THE FOLLOWING SECURITY MEASURES: SPECIAL DOCUMENT PAPER, INK SCREENS, WATERMARK, BACKGROUND DESIGNS, HOLOGRAM AND OTHER SECURITY FEATURES NOT LISTED AND DO EXCEED DOCUMENT SECURITY INDUSTRY GUIDELINES.

For terms & conditions and to verify this report, please visit www.igi.org