



**ELECTRONIC COPY**

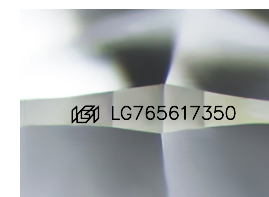
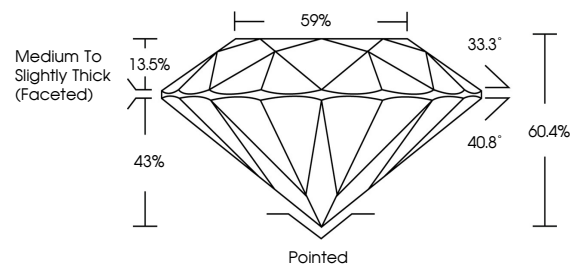
LG765617350  
Report verification at igi.org



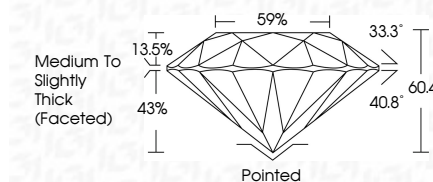
January 15, 2026  
IGI Report Number **LG765617350**  
Description **LABORATORY GROWN DIAMOND**  
Shape and Cutting Style **ROUND BRILLIANT**  
Measurements **10.24 - 10.28 X 6.20 MM**  
**GRADING RESULTS**  
Carat Weight **4.04 CARATS**  
Color Grade **G**  
Clarity Grade **VS 1**  
Cut Grade **IDEAL**

January 15, 2026  
IGI Report Number **LG765617350**  
Description **LABORATORY GROWN DIAMOND**  
Shape and Cutting Style **ROUND BRILLIANT**  
Measurements **10.24 - 10.28 X 6.20 MM**  
**GRADING RESULTS**  
Carat Weight **4.04 CARATS**  
Color Grade **G**  
Clarity Grade **VS 1**  
Cut Grade **IDEAL**

**PROPORTIONS**



Sample Image Used



**ADDITIONAL GRADING INFORMATION**  
Polish **EXCELLENT**  
Symmetry **EXCELLENT**  
Fluorescence **NONE**  
Inscription(s) **IGI LG765617350**

Comments: This Laboratory Grown Diamond was created by Chemical Vapor Deposition (CVD) growth process. Type IIa

**COLOR**

D E F G H I J Faint Very Light Light

**CLARITY**

FL	IF	VS <sup>1-2</sup>	VS <sup>1-2</sup>	SI <sup>1-2</sup>	I <sup>1-3</sup>
Flawless	Internally Flawless	Very Very Slightly Included	Very Slightly Included	Slightly Included	Included

**ADDITIONAL GRADING INFORMATION**

Polish **EXCELLENT**  
Symmetry **EXCELLENT**  
Fluorescence **NONE**  
Inscription(s) **IGI LG765617350**  
Comments: This Laboratory Grown Diamond was created by Chemical Vapor Deposition (CVD) growth process. Type IIa



**IGI**



January 15, 2026  
IGI Report No LG765617350  
ROUND BRILLIANT  
10.24 - 10.28 X 6.20 MM  
4.04 CARATS  
G  
VS 1  
IDEAL  
60.4%  
59%  
Medium To Slightly Thick (Faceted)  
Pointed  
EXCELLENT  
EXCELLENT  
NONE  
IGI LG765617350  
Comments: This Laboratory Grown Diamond was created by Chemical Vapor Deposition (CVD) growth process. Type IIa