



ELECTRONIC COPY

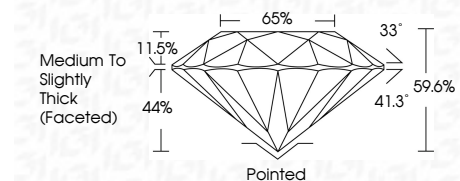
LG765614781
Report verification at igi.org



January 17, 2026
IGI Report Number **LG765614781**
Description **LABORATORY GROWN DIAMOND**
Shape and Cutting Style **ROUND BRILLIANT**
Measurements **8.11 - 8.15 X 4.84 MM**

GRADING RESULTS

Carat Weight **2.00 CARATS**
Color Grade **F**
Clarity Grade **VS 2**
Cut Grade **VERY GOOD**



ADDITIONAL GRADING INFORMATION

Polish **EXCELLENT**
Symmetry **EXCELLENT**
Fluorescence **NONE**
Inscription(s) **IGI LG765614781**
Comments: This Laboratory Grown Diamond was created by Chemical Vapor Deposition (CVD) growth process. Type IIa



January 17, 2026
IGI Report No LG765614781
ROUND BRILLIANT
8.11 - 8.15 X 4.84 MM
Carat Weight **2.00 CARATS**
Color Grade **F**
Clarity Grade **VS 2**
Cut Grade **VERY GOOD**
Depth **59.6%**
Table **65%**
Girdle **Medium To Slightly Thick (Faceted)**
Culet **Pointed**
Polish **EXCELLENT**
Symmetry **EXCELLENT**
Fluorescence **NONE**
Inscription(s) **IGI LG765614781**
Comments: This Laboratory Grown Diamond was created by Chemical Vapor Deposition (CVD) growth process. Type IIa

January 17, 2026
IGI Report Number **LG765614781**
Description **LABORATORY GROWN DIAMOND**
Shape and Cutting Style **ROUND BRILLIANT**
Measurements **8.11 - 8.15 X 4.84 MM**

GRADING RESULTS

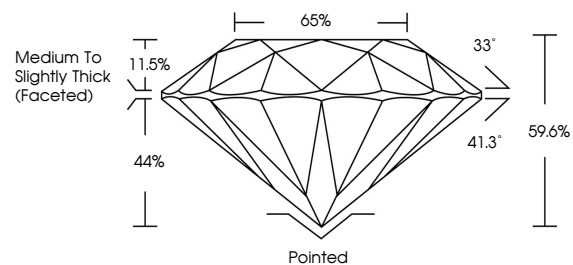
Carat Weight **2.00 CARATS**
Color Grade **F**
Clarity Grade **VS 2**
Cut Grade **VERY GOOD**

ADDITIONAL GRADING INFORMATION

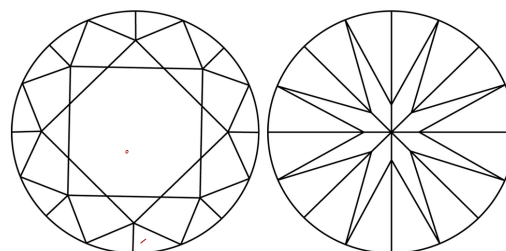
Polish **EXCELLENT**
Symmetry **EXCELLENT**
Fluorescence **NONE**
Inscription(s) **IGI LG765614781**

Comments: This Laboratory Grown Diamond was created by Chemical Vapor Deposition (CVD) growth process. Type IIa

PROPORTIONS

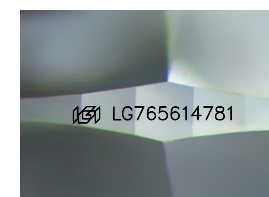


CLARITY CHARACTERISTICS



KEY TO SYMBOLS

Red symbols indicate internal characteristics.
Green symbols indicate external characteristics.



Sample Image Used

COLOR

D E F G H I J Faint Very Light Light

CLARITY

FL	IF	VS ¹⁻²	VS ¹⁻²	SI ¹⁻²	I ¹⁻³
Flawless	Internally Flawless	Very Very Slightly Included	Very Slightly Included	Slightly Included	Included

