



**ELECTRONIC COPY**

## LABORATORY GROWN DIAMOND REPORT

LG765613129  
Report verification at [igi.org](https://igi.org)

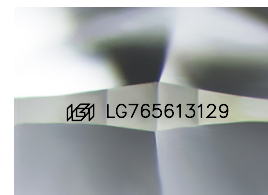
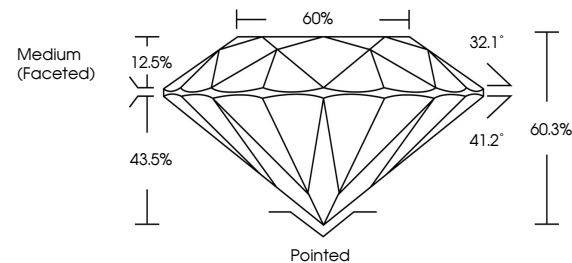
|                         |                          |
|-------------------------|--------------------------|
| January 14, 2026        |                          |
| IGI Report Number       | LG765613129              |
| Description             | LABORATORY GROWN DIAMOND |
| Shape and Cutting Style | ROUND BRILLIANT          |
| Measurements            | 8.14 - 8.16 X 4.91 MM    |
| GRADING RESULTS         |                          |
| Carat Weight            | 2.01 CARATS              |
| Color Grade             | D                        |
| Clarity Grade           | VVS 2                    |
| Cut Grade               | EXCELLENT                |

### ADDITIONAL GRADING INFORMATION

|                |   |
|----------------|---|
| Polish         | EXCELLENT   |
| Symmetry       | EXCELLENT   |
| Fluorescence   | NONE  |
| Inscription(s) |  LG765613129 |

Comments: This Laboratory Grown Diamond was created by Chemical Vapor Deposition (CVD) growth process.  
Type IIa

## PROPORTIONS



Sample Image Used

## COLOR

D E F G H I J Faint Very Light Light

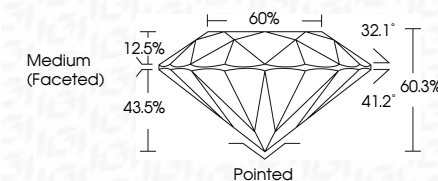
## CLARITY

| FL       | IF                  | VVS <sup>1-2</sup>          | VS <sup>1-2</sup>      | SI <sup>1-2</sup> | I <sup>1-3</sup> |
|----------|---------------------|-----------------------------|------------------------|-------------------|------------------|
| Flawless | Internally Flawless | Very Very Slightly Included | Very Slightly Included | Slightly Included | Included         |

## LABORATORY GROWN DIAMOND REPORT



|                         |                          |
|-------------------------|--------------------------|
| January 14, 2026        |                          |
| IGI Report Number       | LG765613129              |
| Description             | LABORATORY GROWN DIAMOND |
| Shape and Cutting Style | ROUND BRILLIANT          |
| Measurements            | 8.14 - 8.16 X 4.91 MM    |
| GRADING RESULTS         |                          |
| Carat Weight            | 2.01 CARATS              |
| Color Grade             | D                        |
| Clarity Grade           | VVS 2                    |
| Cut Grade               | EXCELLENT                |



### ADDITIONAL GRADING INFORMATION

|   |  |
|---|--|
| Polish  | EXCELLENT  |
| Symmetry  | EXCELLENT  |
| Fluorescence  | NONE   |
| Inscription(s)  |  LG76613129 |
| <p>Comments: This Laboratory Grown Diamond was created by Chemical Vapor Deposition (CVD) growth process.</p> <p>Type IIa</p> |  |



© IGI 2020, International Gemological Institute

FD - 10 20



THIS DOCUMENT WAS PRODUCED WITH THE FOLLOWING SECURITY MEASURES: SPECIAL DOCUMENT PAPER, INK SCREENS, WATERMARK, BACKGROUND DESIGNS, HOLOGRAM, AND OTHER SECURITY FEATURES NOT LISTED AND DO EXCEED DOCUMENT SECURITY INDUSTRY GUIDELINES

**www.igi.org**

January 14, 2026  
IGI Report No LG765613129  
ROUND BRILLIANT

|                      |               |                   |
|----------------------|---------------|-------------------|
| 8.14 - 8.16 X 491 MM | Carat Weight  | 2.01 CARATS       |
|                      | Color Grade   | D                 |
|                      | Clarity Grade | VVS 2             |
|                      | Cut Grade     | EXCELLENT         |
|                      | Depth         | 60.9%             |
|                      | Table         | 60%               |
|                      | Girdle        | Medium (Faceted)  |
|                      | Culet         | Pointed           |
|                      | Polish        | EXCELLENT         |
|                      | Symmetry      | EXCELLENT         |
|                      | Fluorescence  | NONE              |
|                      | Report #      | 45611274545131702 |

**Comments:**  
This Laboratory Grown Diamond was created by Chemical Vapor Deposition (CVD) growth process.