



ELECTRONIC COPY

LG765613122
Report verification at igi.org



January 15, 2026

IGI Report Number **LG765613122**

Description **LABORATORY GROWN DIAMOND**

Shape and Cutting Style **ROUND BRILLIANT**

Measurements **7.29 - 7.34 X 4.50 MM**

GRADING RESULTS

Carat Weight **1.50 CARAT**

Color Grade **E**

Clarity Grade **VVS 2**

Cut Grade **IDEAL**

January 15, 2026

IGI Report Number **LG765613122**

Description **LABORATORY GROWN DIAMOND**

Shape and Cutting Style **ROUND BRILLIANT**

Measurements **7.29 - 7.34 X 4.50 MM**

GRADING RESULTS

Carat Weight **1.50 CARAT**

Color Grade **E**

Clarity Grade **VVS 2**

Cut Grade **IDEAL**

ADDITIONAL GRADING INFORMATION

Polish **EXCELLENT**

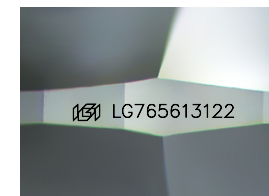
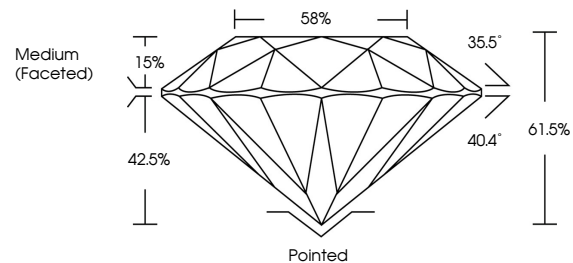
Symmetry **EXCELLENT**

Fluorescence **NONE**

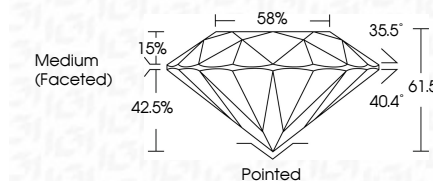
Inscription(s) **LG765613122**

Comments: This Laboratory Grown Diamond was created by Chemical Vapor Deposition (CVD) growth process. Type IIa

PROPORTIONS



Sample Image Used



COLOR

D E F G H I J Faint Very Light Light

CLARITY

FL	IF	VS ¹⁻²	VS ¹⁻²	SI ¹⁻²	I ¹⁻³
Flawless	Internally Flawless	Very Very Slightly Included	Very Slightly Included	Slightly Included	Included

ADDITIONAL GRADING INFORMATION

Polish **EXCELLENT**

Symmetry **EXCELLENT**

Fluorescence **NONE**

Inscription(s) **LG765613122**

Comments: This Laboratory Grown Diamond was created by Chemical Vapor Deposition (CVD) growth process. Type IIa



IGI



January 15, 2026	IGI Report No LG765613122	1.50 CARAT	E	Pointed
ROUND BRILLIANT	7.29 - 7.34 X 4.50 MM	VVS 2	IDEAL	EXCELLENT
Carat Weight	Color Grade	Clarity Grade	Depth	Symmetry
1.50 CARAT	E	VVS 2	61.5%	EXCELLENT
Color Grade	Clarity Grade	Cut Grade	Girdle	Fluorescence
E	VVS 2	IDEAL	Medium (Faceted)	NONE
Clarity Grade	Depth	Cut Grade	Inscription(s)	None
VVS 2	61.5%	IDEAL	LG765613122	
Depth	Girdle	Cut Grade		
61.5%	Medium (Faceted)	IDEAL		
Girdle	Culet	Polish		
Medium (Faceted)	Pointed	EXCELLENT		
	Polish	EXCELLENT		
	Symmetry	EXCELLENT		
	Fluorescence	NONE		
	Inscription(s)	LG765613122		
	Comments:	This Laboratory Grown Diamond was created by Chemical Vapor Deposition (CVD) growth process. Type IIa		