



**ELECTRONIC COPY**

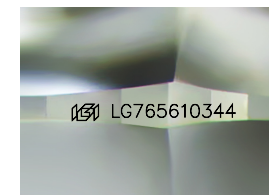
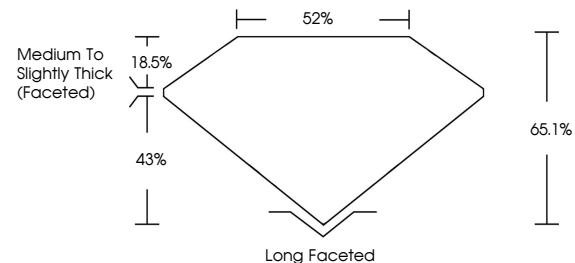
LG765610344  
Report verification at igi.org



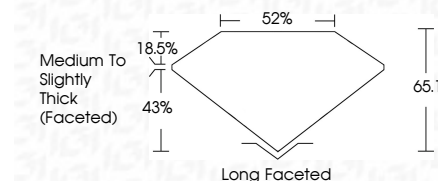
January 10, 2026  
IGI Report Number **LG765610344**  
Description **LABORATORY GROWN DIAMOND**  
Shape and Cutting Style **CUSHION MODIFIED BRILLIANT**  
Measurements **11.73 X 8.74 X 5.69 MM**  
**GRADING RESULTS**  
Carat Weight **4.22 CARATS**  
Color Grade **D**  
Clarity Grade **VVS 2**

January 10, 2026  
IGI Report Number **LG765610344**  
Description **LABORATORY GROWN DIAMOND**  
Shape and Cutting Style **CUSHION MODIFIED BRILLIANT**  
Measurements **11.73 X 8.74 X 5.69 MM**  
**GRADING RESULTS**  
Carat Weight **4.22 CARATS**  
Color Grade **D**  
Clarity Grade **VVS 2**

**PROPORTIONS**



Sample Image Used



**ADDITIONAL GRADING INFORMATION**

Polish **EXCELLENT**  
Symmetry **EXCELLENT**  
Fluorescence **NONE**  
Inscription(s) **IGI LG765610344**

Comments: This Laboratory Grown Diamond was created by Chemical Vapor Deposition (CVD) growth process. Type IIa

**ADDITIONAL GRADING INFORMATION**

Polish **EXCELLENT**  
Symmetry **EXCELLENT**  
Fluorescence **NONE**  
Inscription(s) **IGI LG765610344**  
Comments: This Laboratory Grown Diamond was created by Chemical Vapor Deposition (CVD) growth process. Type IIa

**COLOR**

D E F G H I J Faint Very Light Light

**CLARITY**

FL	IF	VVS <sup>1-2</sup>	VS <sup>1-2</sup>	SI <sup>1-2</sup>	I <sup>1-3</sup>
Flawless	Internally Flawless	Very Very Slightly Included	Very Slightly Included	Slightly Included	Included



**IGI**



January 10, 2026  
IGI Report No LG765610344  
**CUSHION MODIFIED BRILLIANT**  
11.73 X 8.74 X 5.69 MM  
4.22 CARATS  
D  
VVS 2  
65.1%  
62%  
Medium to Slightly Thick (Faceted)  
Long Faceted  
EXCELLENT  
EXCELLENT  
NONE  
IGI LG765610344

Comments: This Laboratory Grown Diamond was created by Chemical Vapor Deposition (CVD) growth process. Type IIa