



ELECTRONIC COPY

LG765610013
Report verification at igi.org



January 10, 2026

IGI Report Number **LG765610013**

Description **LABORATORY GROWN DIAMOND**

Shape and Cutting Style **EMERALD CUT**

Measurements **12.49 X 7.84 X 5.32 MM**

GRADING RESULTS

Carat Weight **5.56 CARATS**

Color Grade **E**

Clarity Grade **VVS 1**

January 10, 2026
IGI Report Number **LG765610013**
Description **LABORATORY GROWN DIAMOND**
Shape and Cutting Style **EMERALD CUT**
Measurements **12.49 X 7.84 X 5.32 MM**

GRADING RESULTS

Carat Weight **5.56 CARATS**

Color Grade **E**

Clarity Grade **VVS 1**

ADDITIONAL GRADING INFORMATION

Polish **EXCELLENT**

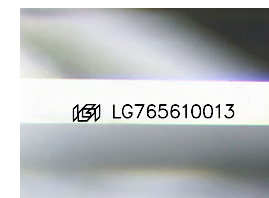
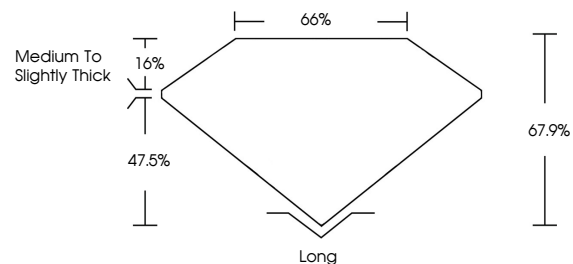
Symmetry **EXCELLENT**

Fluorescence **NONE**

Inscription(s) **IGI LG765610013**

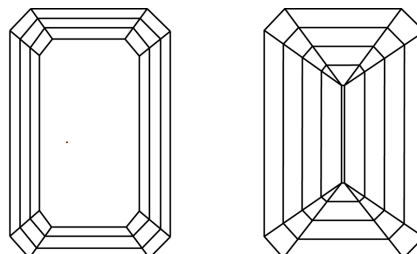
Comments: This Laboratory Grown Diamond was created by Chemical Vapor Deposition (CVD) growth process. Type IIa

PROPORTIONS



Sample Image Used

CLARITY CHARACTERISTICS



KEY TO SYMBOLS

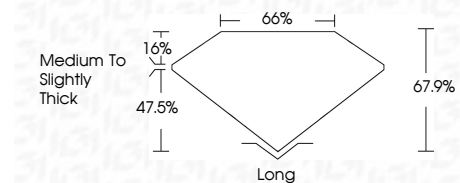
Red symbols indicate internal characteristics.
Green symbols indicate external characteristics.

COLOR

D E F G H I J Faint Very Light Light

CLARITY

FL	IF	VVS ¹⁻²	VS ¹⁻²	SI ¹⁻²	I ¹⁻³
Flawless	Internally Flawless	Very Very Slightly Included	Very Slightly Included	Slightly Included	Included



ADDITIONAL GRADING INFORMATION

Polish **EXCELLENT**

Symmetry **EXCELLENT**

Fluorescence **NONE**

Inscription(s) **IGI LG765610013**

Comments: This Laboratory Grown Diamond was created by Chemical Vapor Deposition (CVD) growth process. Type IIa



IGI



January 10, 2026
IGI Report No LG765610013
EMERALD CUT
12.49 X 7.84 X 5.32 MM
5.56 CARATS
E
VVS 1
67.9%
66%
Medium to Slightly Thick
Long
EXCELLENT
EXCELLENT
NONE
IGI LG765610013
Comments: This Laboratory Grown Diamond was created by Chemical Vapor Deposition (CVD) growth process. Type IIa