



ELECTRONIC COPY

LG765609957
Report verification at igi.org



January 16, 2026
IGI Report Number **LG765609957**
Description **LABORATORY GROWN DIAMOND**
Shape and Cutting Style **SQUARE CUSHION MODIFIED BRILLIANT**
Measurements **7.93 X 7.87 X 5.39 MM**
GRADING RESULTS
Carat Weight **2.58 CARATS**
Color Grade **F**
Clarity Grade **VVS 2**

LABORATORY GROWN DIAMOND REPORT

January 16, 2026
IGI Report Number **LG765609957**
Description **LABORATORY GROWN DIAMOND**
Shape and Cutting Style **SQUARE CUSHION MODIFIED BRILLIANT**
Measurements **7.93 X 7.87 X 5.39 MM**

GRADING RESULTS

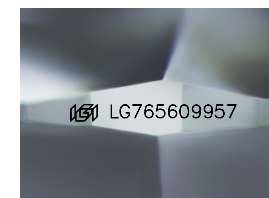
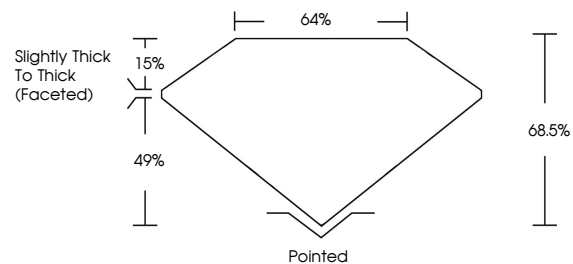
Carat Weight **2.58 CARATS**
Color Grade **F**
Clarity Grade **VVS 2**

ADDITIONAL GRADING INFORMATION

Polish **EXCELLENT**
Symmetry **EXCELLENT**
Fluorescence **NONE**
Inscription(s) **IGI LG765609957**

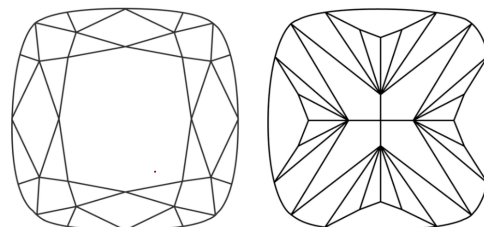
Comments: This Laboratory Grown Diamond was created by Chemical Vapor Deposition (CVD) growth process.
Type IIa

PROPORTIONS



Sample Image Used

CLARITY CHARACTERISTICS



KEY TO SYMBOLS

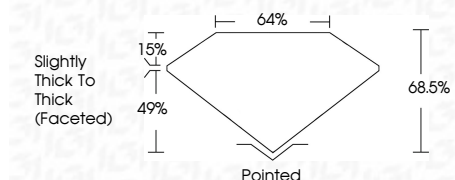
Red symbols indicate internal characteristics.
Green symbols indicate external characteristics.

COLOR

D E F G H I J Faint Very Light Light

CLARITY

FL	IF	VVS ¹⁻²	VS ¹⁻²	SI ¹⁻²	I ¹⁻³
Flawless	Internally Flawless	Very Very Slightly Included	Very Slightly Included	Slightly Included	Included



ADDITIONAL GRADING INFORMATION

Polish **EXCELLENT**
Symmetry **EXCELLENT**
Fluorescence **NONE**
Inscription(s) **IGI LG765609957**
Comments: This Laboratory Grown Diamond was created by Chemical Vapor Deposition (CVD) growth process.
Type IIa



January 16, 2026
IGI Report No LG765609957
SQUARE CUSHION MODIFIED BRILLIANT
7.93 X 7.87 X 5.39 MM
2.58 CARATS
F
VVS 2
68.5%
49%
Slightly Thick To Thick (Faceted)
Pointed
EXCELLENT
EXCELLENT
NONE
IGI LG765609957
Comments: This Laboratory Grown Diamond was created by Chemical Vapor Deposition (CVD) growth process.
Type IIa