



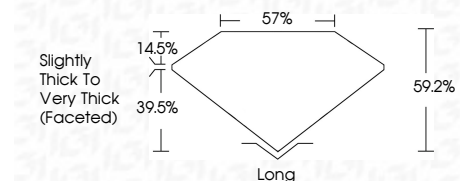
ELECTRONIC COPY

LG765607630
Report verification at igi.org



February 18, 2026
IGI Report Number **LG765607630**
Description **LABORATORY GROWN DIAMOND**
Shape and Cutting Style **CUSHION MIXED CUT**
Measurements **9.81 X 7.77 X 4.60 MM**

GRADING RESULTS
Carat Weight **3.32 CARATS**
Color Grade **E**
Clarity Grade **VS 1**



ADDITIONAL GRADING INFORMATION
Polish **EXCELLENT**
Symmetry **EXCELLENT**
Fluorescence **NONE**
Inscription(s) **IGI LG765607630**
Comments: This Laboratory Grown Diamond was created by Chemical Vapor Deposition (CVD) growth process. Type IIa



February 18, 2026
IGI Report No LG765607630
CUSHION MIXED CUT
3.32 CARATS **E**
Carat Weight **VS 1**
Color Grade **69.2%**
Clarity Grade **67%**
Table **Slightly Thick To Very Thick (Faceted)**
Depth
Girdle
Culet
Long
Polish **EXCELLENT**
Symmetry **EXCELLENT**
Fluorescence **NONE**
Inscription(s) **IGI LG765607630**
Comments: This Laboratory Grown Diamond was created by Chemical Vapor Deposition (CVD) growth process. Type IIa

LABORATORY GROWN DIAMOND REPORT

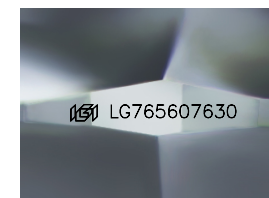
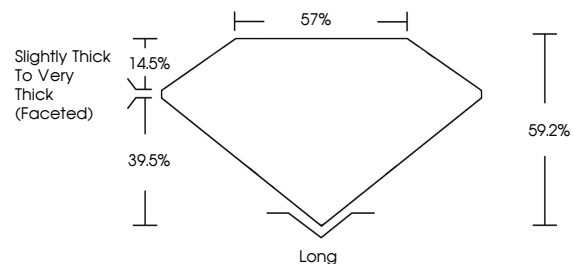
February 18, 2026
IGI Report Number **LG765607630**
Description **LABORATORY GROWN DIAMOND**
Shape and Cutting Style **CUSHION MIXED CUT**
Measurements **9.81 X 7.77 X 4.60 MM**

GRADING RESULTS
Carat Weight **3.32 CARATS**
Color Grade **E**
Clarity Grade **VS 1**

ADDITIONAL GRADING INFORMATION
Polish **EXCELLENT**
Symmetry **EXCELLENT**
Fluorescence **NONE**
Inscription(s) **IGI LG765607630**

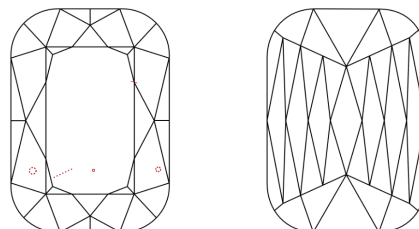
Comments: This Laboratory Grown Diamond was created by Chemical Vapor Deposition (CVD) growth process. Type IIa

PROPORTIONS



Sample Image Used

CLARITY CHARACTERISTICS



KEY TO SYMBOLS

Red symbols indicate internal characteristics.
Green symbols indicate external characteristics.

COLOR

D E F G H I J Faint Very Light Light

CLARITY

FL	IF	VS ¹⁻²	VS ¹⁻²	SI ¹⁻²	I ¹⁻³
Flawless	Internally Flawless	Very Very Slightly Included	Very Slightly Included	Slightly Included	Included

