

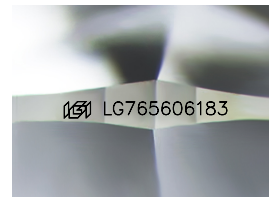
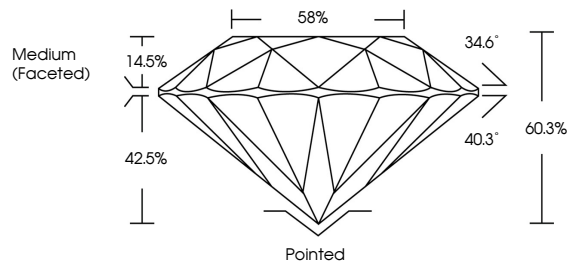


**INTERNATIONAL
GEMOLOGICAL
INSTITUTE**

ELECTRONIC COPY

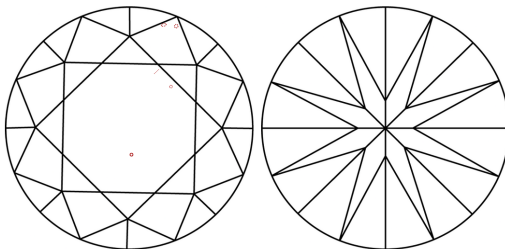
LG765606183
Report verification at igi.org

PROPORTIONS



Sample Image Used

CLARITY CHARACTERISTICS



KEY TO SYMBOLS

Red symbols indicate internal characteristics.
Green symbols indicate external characteristics.

COLOR

D E F G H I J Faint Very Light Light

CLARITY

FL IF WS¹⁻² VS¹⁻² SI¹⁻² I¹⁻³

Flawless	Internally Flawless	Very Very Slightly Included	Very Slightly Included	Slightly Included	Included
----------	---------------------	-----------------------------	------------------------	-------------------	----------



February 2, 2026

IGI Report Number **LG765606183**

Description	LABORATORY GROWN DIAMOND
-------------	--------------------------

Shape and Cutting Style **ROUND BRILLIANT**

Measurements 13.40 - 13.46 X 8.10 MM

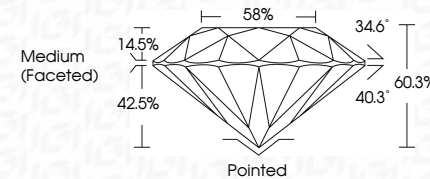
GRADING RESULTS

Carat Weight **9.02 CARATS**

Color Grade	F
-------------	---

Clarity Grade VS 2

Cut Grade **IDEAL**



ADDITIONAL GRADING INFORMATION

Polish **EXCELLENCE**Symmetry **EXCELLENCE**

Fluorescence NONI

Inscription(s) LG76560618

Comments: This Laboratory Grown Diamond was created by Chemical Vapor Deposition (CVD) growth process.
Type IIa



IG



© IGI 2020, International Gemological Institute

FD - 10 20

www.igi.org

THIS DOCUMENT WAS PRODUCED WITH THE FOLLOWING SECURITY MEASURES: SPECIAL DOCUMENT PAPER, INK SCREENS, WATERMARK, BACKGROUND PATTERN, HIGH QUALITY AND OTHER SECURITY FEATURES ARE USED, AND DO NOT DISCLOSE DOCUMENTS TO OTHERS WITHOUT YOUR AUTHORITY.

February 2, 2026
IGI Report No LG765606183
ROUND BRILLIANT

13.40 - 13.46 X 8.10 MM	9.02 CARATS	
Carat Weight	F	VS 2
Color Grade		IDEAL
Clarity Grade		60.3%
Cut Grade		58%
Depth		
Table		
Grille		Medium (Faceted)

Culet	Pointed
Polish	EXCELLENT
Symmetry	EXCELLENT
Fluorescence	NONE
Color (in daylight)	4081 G7454505183

Comments:
This Laboratory Grown Diamond was created by Chemical Vapor Deposition (CVD) growth process.
Type IIa