



ELECTRONIC COPY

LG765605075
Report verification at igi.org



February 2, 2026

IGI Report Number **LG765605075**

Description **LABORATORY GROWN DIAMOND**

Shape and Cutting Style **ROUND BRILLIANT**

Measurements **8.03 - 8.10 X 5.04 MM**

GRADING RESULTS

Carat Weight **2.03 CARATS**

Color Grade **E**

Clarity Grade **VS 2**

Cut Grade **EXCELLENT**

February 2, 2026
IGI Report Number **LG765605075**
Description **LABORATORY GROWN DIAMOND**
Shape and Cutting Style **ROUND BRILLIANT**
Measurements **8.03 - 8.10 X 5.04 MM**

GRADING RESULTS

Carat Weight **2.03 CARATS**

Color Grade **E**

Clarity Grade **VS 2**

Cut Grade **EXCELLENT**

ADDITIONAL GRADING INFORMATION

Polish **EXCELLENT**

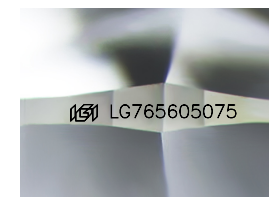
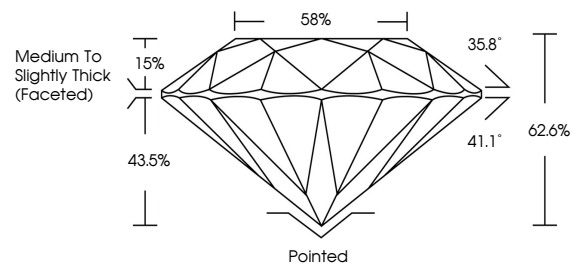
Symmetry **EXCELLENT**

Fluorescence **NONE**

Inscription(s) **IGI LG765605075**

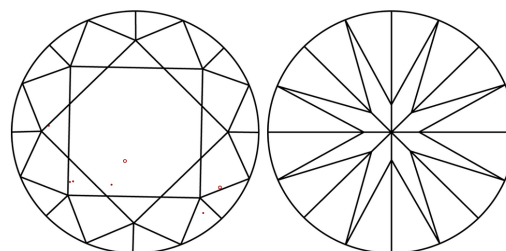
Comments: This Laboratory Grown Diamond was created by Chemical Vapor Deposition (CVD) growth process.
Type IIa

PROPORTIONS



Sample Image Used

CLARITY CHARACTERISTICS



KEY TO SYMBOLS

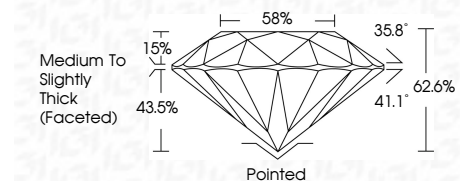
Red symbols indicate internal characteristics.
Green symbols indicate external characteristics.

COLOR

D E F G H I J Faint Very Light Light

CLARITY

FL	IF	VS ¹⁻²	VS ¹⁻²	SI ¹⁻²	I ¹⁻³
Flawless	Internally Flawless	Very Very Slightly Included	Very Slightly Included	Slightly Included	Included



ADDITIONAL GRADING INFORMATION

Polish **EXCELLENT**

Symmetry **EXCELLENT**

Fluorescence **NONE**

Inscription(s) **IGI LG765605075**

Comments: This Laboratory Grown Diamond was created by Chemical Vapor Deposition (CVD) growth process.
Type IIa



IGI



February 2, 2026
IGI Report No LG765605075
ROUND BRILLIANT
8.03 - 8.10 X 5.04 MM
2.03 CARATS
E
Color Grade
VS 2
Clarity Grade
EXCELLENT
Depth
62.6%
Table
58%
Girdle
Medium To Slightly Thick (Faceted)
Culet
Pointed
Polish
EXCELLENT
Symmetry
EXCELLENT
Fluorescence
NONE
Inscription(s)
IGI LG765605075
Comments: This Laboratory Grown Diamond was created by Chemical Vapor Deposition (CVD) growth process.
Type IIa