



ELECTRONIC COPY

LG765604948
Report verification at igi.org



February 2, 2026

IGI Report Number LG765604948

Description LABORATORY GROWN DIAMOND

Shape and Cutting Style ROUND BRILLIANT

Measurements 8.12 - 8.16 X 4.96 MM

GRADING RESULTS

Carat Weight 2.02 CARATS

Color Grade FANCY VIVID BLUE

Clarity Grade VVS 2

Cut Grade IDEAL

February 2, 2026

IGI Report Number LG765604948

Description LABORATORY GROWN DIAMOND

Shape and Cutting Style ROUND BRILLIANT

Measurements 8.12 - 8.16 X 4.96 MM

GRADING RESULTS

Carat Weight 2.02 CARATS

Color Grade FANCY VIVID BLUE

Clarity Grade VVS 2

Cut Grade IDEAL

ADDITIONAL GRADING INFORMATION

Polish EXCELLENT

Symmetry EXCELLENT

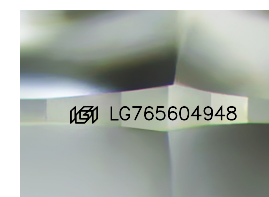
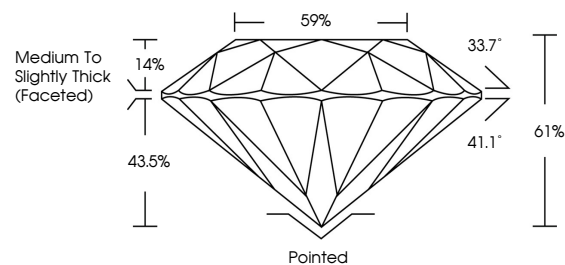
Fluorescence NONE

Inscription(s) IGI LG765604948

Comments: This Laboratory Grown Diamond was created by Chemical Vapor Deposition (CVD) growth process.

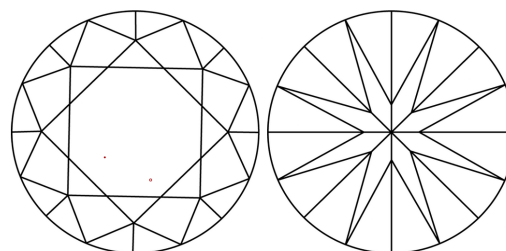
Indications of post-growth treatment.

PROPORTIONS



Sample Image Used

CLARITY CHARACTERISTICS



KEY TO SYMBOLS

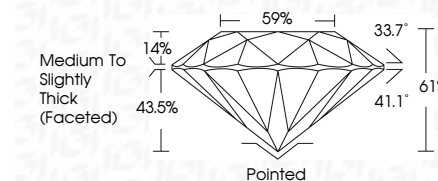
Red symbols indicate internal characteristics. Green symbols indicate external characteristics.

COLOR

D E F G H I J Faint Very Light Light

CLARITY

FL IF VVS 1-2 VS 1-2 SI 1-2 I 1-3
Flawless Internally Flawless Very Very Slightly Included Very Slightly Included Slightly Included Included



ADDITIONAL GRADING INFORMATION

Polish EXCELLENT

Symmetry EXCELLENT

Fluorescence NONE

Inscription(s) IGI LG765604948

Comments: This Laboratory Grown Diamond was created by Chemical Vapor Deposition (CVD) growth process. Indications of post-growth treatment.



Summary table of report details: February 2, 2026, IGI Report No LG765604948, ROUND BRILLIANT, 2.02 CARATS, FANCY VIVID BLUE, VVS 2, IDEAL, 61%, 59%, Medium To Slightly Thick (Faceted), Pointed, EXCELLENT, EXCELLENT, NONE, IGI LG765604948.