



**ELECTRONIC COPY**

LG765604946  
Report verification at igi.org



February 2, 2026

IGI Report Number **LG765604946**

Description **LABORATORY GROWN DIAMOND**

Shape and Cutting Style **ROUND BRILLIANT**

Measurements **8.61 - 8.65 X 5.22 MM**

**GRADING RESULTS**

Carat Weight **2.38 CARATS**

Color Grade **FANCY VIVID BLUE**

Clarity Grade **VS 1**

Cut Grade **IDEAL**

February 2, 2026

IGI Report Number **LG765604946**

Description **LABORATORY GROWN DIAMOND**

Shape and Cutting Style **ROUND BRILLIANT**

Measurements **8.61 - 8.65 X 5.22 MM**

**GRADING RESULTS**

Carat Weight **2.38 CARATS**

Color Grade **FANCY VIVID BLUE**

Clarity Grade **VS 1**

Cut Grade **IDEAL**

**ADDITIONAL GRADING INFORMATION**

Polish **EXCELLENT**

Symmetry **EXCELLENT**

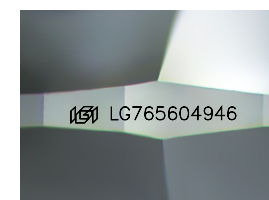
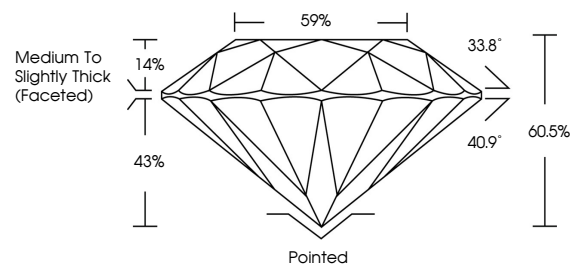
Fluorescence **NONE**

Inscription(s) **LG765604946**

Comments: This Laboratory Grown Diamond was created by Chemical Vapor Deposition (CVD) growth process.

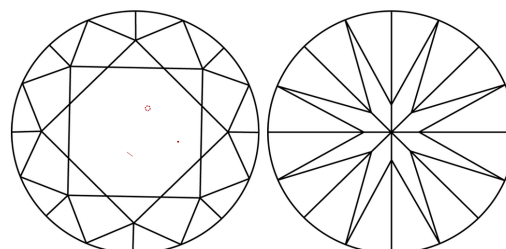
Indications of post-growth treatment.

**PROPORTIONS**



Sample Image Used

**CLARITY CHARACTERISTICS**



**KEY TO SYMBOLS**

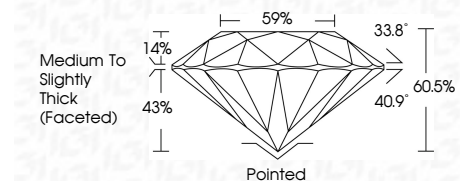
Red symbols indicate internal characteristics.  
Green symbols indicate external characteristics.

**COLOR**

D E F G H I J Faint Very Light Light

**CLARITY**

FL	IF	VS <sup>1-2</sup>	VS <sup>1-2</sup>	SI <sup>1-2</sup>	I <sup>1-3</sup>
Flawless	Internally Flawless	Very Very Slightly Included	Very Slightly Included	Slightly Included	Included



**ADDITIONAL GRADING INFORMATION**

Polish **EXCELLENT**

Symmetry **EXCELLENT**

Fluorescence **NONE**

Inscription(s) **LG765604946**

Comments: This Laboratory Grown Diamond was created by Chemical Vapor Deposition (CVD) growth process. Indications of post-growth treatment.



**IGI**



February 2, 2026  
IGI Report No LG765604946  
ROUND BRILLIANT

8.61 - 8.65 X 5.22 MM  
2.38 CARATS  
FANCY VIVID BLUE  
VS 1  
IDEAL  
60.5%  
59%  
Medium To Slightly Thick (Faceted)

Pointed  
EXCELLENT  
EXCELLENT  
NONE  
NONE  
IGI LG765604946

Comments: This Laboratory Grown Diamond was created by Chemical Vapor Deposition (CVD) growth process. Indications of post-growth treatment.