



**ELECTRONIC COPY**

LG765604915  
Report verification at igi.org



February 4, 2026

IGI Report Number **LG765604915**

Description **LABORATORY GROWN DIAMOND**

Shape and Cutting Style **ROUND BRILLIANT**

Measurements **9.58 - 9.62 X 5.73 MM**

**GRADING RESULTS**

Carat Weight **3.27 CARATS**

Color Grade **FANCY VIVID BLUE**

Clarity Grade **VVS 2**

Cut Grade **EXCELLENT**

February 4, 2026

IGI Report Number **LG765604915**

Description **LABORATORY GROWN DIAMOND**

Shape and Cutting Style **ROUND BRILLIANT**

Measurements **9.58 - 9.62 X 5.73 MM**

**GRADING RESULTS**

Carat Weight **3.27 CARATS**

Color Grade **FANCY VIVID BLUE**

Clarity Grade **VVS 2**

Cut Grade **EXCELLENT**

**ADDITIONAL GRADING INFORMATION**

Polish **EXCELLENT**

Symmetry **EXCELLENT**

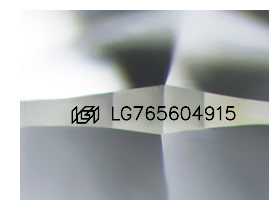
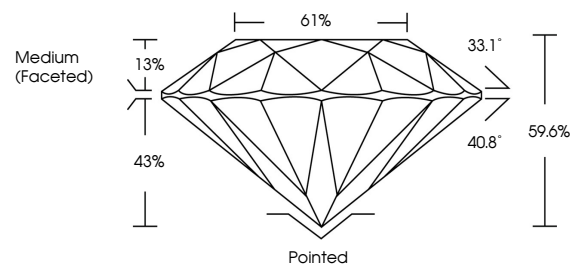
Fluorescence **NONE**

Inscription(s) **IGI LG765604915**

Comments: This Laboratory Grown Diamond was created by Chemical Vapor Deposition (CVD) growth process.

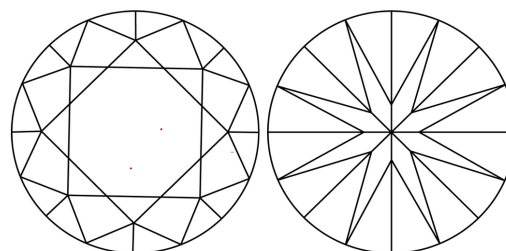
Indications of post-growth treatment.

**PROPORTIONS**



Sample Image Used

**CLARITY CHARACTERISTICS**



**KEY TO SYMBOLS**

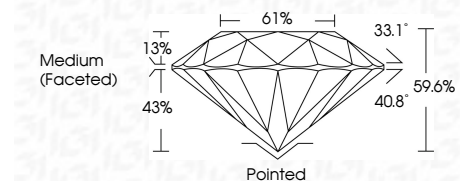
Red symbols indicate internal characteristics.  
Green symbols indicate external characteristics.

**COLOR**

D E F G H I J Faint Very Light Light

**CLARITY**

FL	IF	VVS <sup>1-2</sup>	VS <sup>1-2</sup>	SI <sup>1-2</sup>	I <sup>1-3</sup>
Flawless	Internally Flawless	Very Very Slightly Included	Very Slightly Included	Slightly Included	Included



**ADDITIONAL GRADING INFORMATION**

Polish **EXCELLENT**

Symmetry **EXCELLENT**

Fluorescence **NONE**

Inscription(s) **IGI LG765604915**

Comments: This Laboratory Grown Diamond was created by Chemical Vapor Deposition (CVD) growth process. Indications of post-growth treatment.



February 4, 2026	IGI Report No LG765604915	3.27 CARATS	FANCY VIVID BLUE	VVS 2	EXCELLENT	61%	Medium (Faceted)	Pointed	EXCELLENT	EXCELLENT	NONE	IGI LG765604915	
ROUND BRILLIANT	9.58 - 9.62 X 5.73 MM	Carat Weight	Color Grade	Clarity Grade	Cut Grade	Depth	Table	Girdle	Color	Polish	Symmetry	Fluorescence	Inscription(s)

Comments: This Laboratory Grown Diamond was created by Chemical Vapor Deposition (CVD) growth process. Indications of post-growth treatment.