



**ELECTRONIC COPY**

LG765601430  
Report verification at igi.org



January 30, 2026

IGI Report Number **LG765601430**

Description **LABORATORY GROWN DIAMOND**

Shape and Cutting Style **ROUND BRILLIANT**

Measurements **8.07 - 8.11 X 4.91 MM**

**GRADING RESULTS**

Carat Weight **2.00 CARATS**

Color Grade **D**

Clarity Grade **VVS 2**

Cut Grade **EXCELLENT**

January 30, 2026  
IGI Report Number **LG765601430**  
Description **LABORATORY GROWN DIAMOND**  
Shape and Cutting Style **ROUND BRILLIANT**  
Measurements **8.07 - 8.11 X 4.91 MM**

**GRADING RESULTS**

Carat Weight **2.00 CARATS**

Color Grade **D**

Clarity Grade **VVS 2**

Cut Grade **EXCELLENT**

**ADDITIONAL GRADING INFORMATION**

Polish **EXCELLENT**

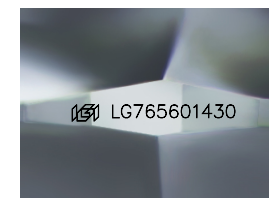
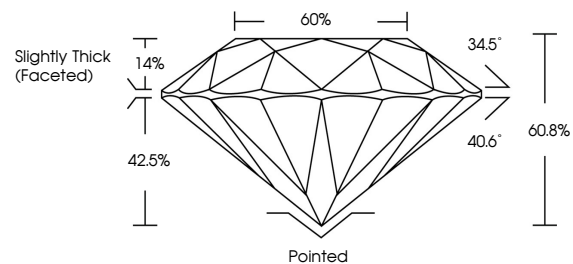
Symmetry **EXCELLENT**

Fluorescence **NONE**

Inscription(s) **LG765601430**

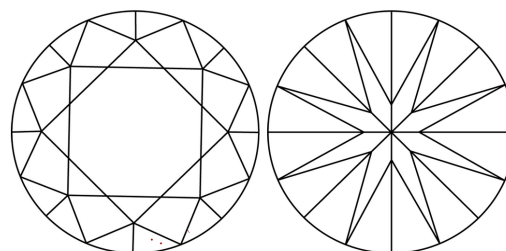
Comments: This Laboratory Grown Diamond was created by Chemical Vapor Deposition (CVD) growth process. Type IIa

**PROPORTIONS**



Sample Image Used

**CLARITY CHARACTERISTICS**



**KEY TO SYMBOLS**

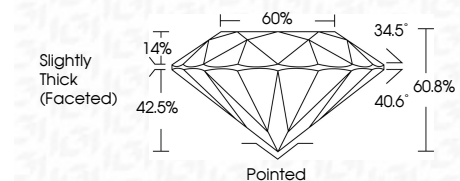
Red symbols indicate internal characteristics.  
Green symbols indicate external characteristics.

**COLOR**

D E F G H I J Faint Very Light Light

**CLARITY**

FL	IF	VVS <sup>1-2</sup>	VS <sup>1-2</sup>	SI <sup>1-2</sup>	I <sup>1-3</sup>
Flawless	Internally Flawless	Very Very Slightly Included	Very Slightly Included	Slightly Included	Included



**ADDITIONAL GRADING INFORMATION**

Polish **EXCELLENT**

Symmetry **EXCELLENT**

Fluorescence **NONE**

Inscription(s) **LG765601430**

Comments: This Laboratory Grown Diamond was created by Chemical Vapor Deposition (CVD) growth process. Type IIa



**IGI**



January 30, 2026  
IGI Report No LG765601430  
ROUND BRILLIANT

2.00 CARATS  
Carat Weight  
Color Grade D  
Clarity Grade VVS 2  
Depth 60.8%  
Table 60%  
Girdle Slightly Thick (Faceted)

Pointed  
Polish EXCELLENT  
Symmetry EXCELLENT  
Fluorescence NONE  
Inscription(s) LG765601430

Comments: This Laboratory Grown Diamond was created by Chemical Vapor Deposition (CVD) growth process. Type IIa