



ELECTRONIC COPY

LG764697948
Report verification at igi.org



February 14, 2026

IGI Report Number **LG764697948**

Description **LABORATORY GROWN DIAMOND**

Shape and Cutting Style **OVAL BRILLIANT**

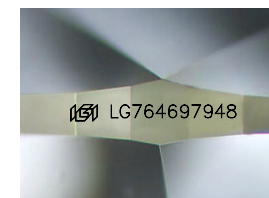
Measurements **12.55 X 8.41 X 5.23 MM**

GRADING RESULTS

Carat Weight **3.54 CARATS**

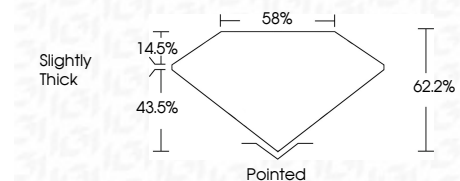
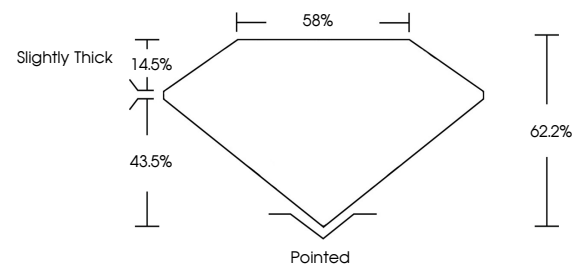
Color Grade **D**

Clarity Grade **VVS 2**

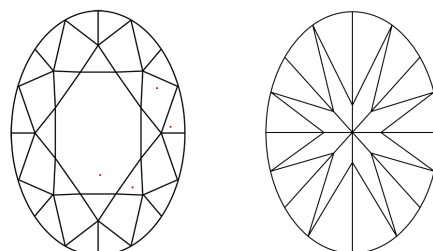


Sample Image Used

PROPORTIONS



CLARITY CHARACTERISTICS



KEY TO SYMBOLS

Red symbols indicate internal characteristics.
Green symbols indicate external characteristics.

COLOR

D E F G H I J Faint Very Light Light

CLARITY

FL	IF	VVS ¹⁻²	VS ¹⁻²	SI ¹⁻²	I ¹⁻³
Flawless	Internally Flawless	Very Very Slightly Included	Very Slightly Included	Slightly Included	Included

ADDITIONAL GRADING INFORMATION

Polish **EXCELLENT**

Symmetry **EXCELLENT**

Fluorescence **NONE**

Inscription(s) **IGI LG764697948**

Comments: This Laboratory Grown Diamond was created by Chemical Vapor Deposition (CVD) growth process. Type IIa



February 14, 2026
IGI Report No LG764697948
OVAL BRILLIANT

12.55 X 8.41 X 5.23 MM

3.54 CARATS
D

Color Grade
VS 2

Depth
62.2%

Table
58%

Graile
Slightly Thick

Culet
Pointed

Polish
EXCELLENT

Symmetry
EXCELLENT

Fluorescence
NONE

Inscription(s)
IGI LG764697948

Comments: This Laboratory Grown Diamond was created by Chemical Vapor Deposition (CVD) growth process. Type IIa