



ELECTRONIC COPY

LG764697344
Report verification at igi.org



February 11, 2026
IGI Report Number **LG764697344**
Description **LABORATORY GROWN DIAMOND**
Shape and Cutting Style **MARQUISE MODIFIED BRILLIANT**
Measurements **12.72 X 6.46 X 4.28 MM**
GRADING RESULTS
Carat Weight **2.50 CARATS**
Color Grade **FANCY VIVID PINK**
Clarity Grade **VS 1**

February 11, 2026
IGI Report Number **LG764697344**
Description **LABORATORY GROWN DIAMOND**
Shape and Cutting Style **MARQUISE MODIFIED BRILLIANT**
Measurements **12.72 X 6.46 X 4.28 MM**

GRADING RESULTS

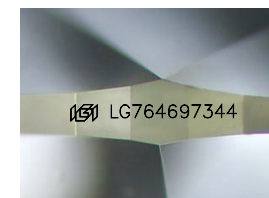
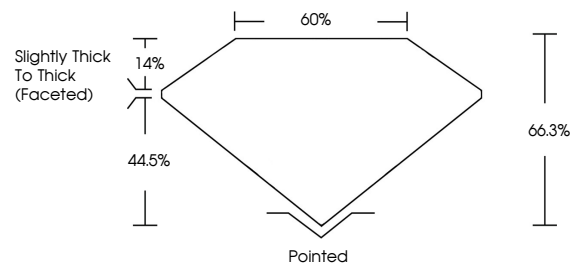
Carat Weight **2.50 CARATS**
Color Grade **FANCY VIVID PINK**
Clarity Grade **VS 1**

ADDITIONAL GRADING INFORMATION

Polish **EXCELLENT**
Symmetry **EXCELLENT**
Fluorescence **STRONG**
Inscription(s) **IGI LG764697344**

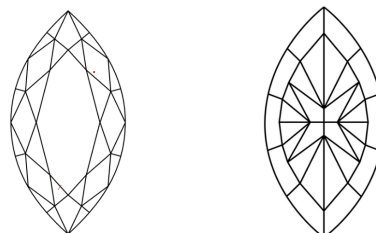
Comments: This Laboratory Grown Diamond was created by Chemical Vapor Deposition (CVD) growth process.
Indications of post-growth treatment.

PROPORTIONS



Sample Image Used

CLARITY CHARACTERISTICS



KEY TO SYMBOLS

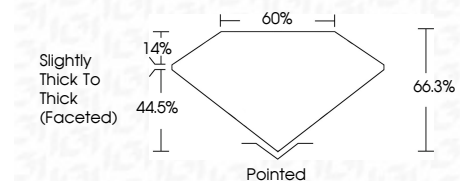
Red symbols indicate internal characteristics.
Green symbols indicate external characteristics.

COLOR

D E F G H I J Faint Very Light Light

CLARITY

FL	IF	VS ¹⁻²	VS ¹⁻²	SI ¹⁻²	I ¹⁻³
Flawless	Internally Flawless	Very Very Slightly Included	Very Slightly Included	Slightly Included	Included



ADDITIONAL GRADING INFORMATION

Polish **EXCELLENT**
Symmetry **EXCELLENT**
Fluorescence **STRONG**
Inscription(s) **IGI LG764697344**
Comments: This Laboratory Grown Diamond was created by Chemical Vapor Deposition (CVD) growth process.
Indications of post-growth treatment.



February 11, 2026
IGI Report No **LG764697344**
MARQUISE MODIFIED BRILLIANT
12.72 X 6.46 X 4.28 MM
Carat Weight **2.50 CARATS**
Color Grade **FANCY VIVID PINK**
Clarity Grade **VS 1**
Depth **66.3%**
Table **14%**
Girdle **Slightly Thick To Thick (Faceted)**
Culet **Pointed**
Polish **EXCELLENT**
Symmetry **EXCELLENT**
Fluorescence **STRONG**
Inscription(s) **IGI LG764697344**
Comments: This Laboratory Grown Diamond was created by Chemical Vapor Deposition (CVD) growth process.
Indications of post-growth treatment.