



ELECTRONIC COPY

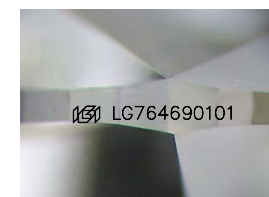
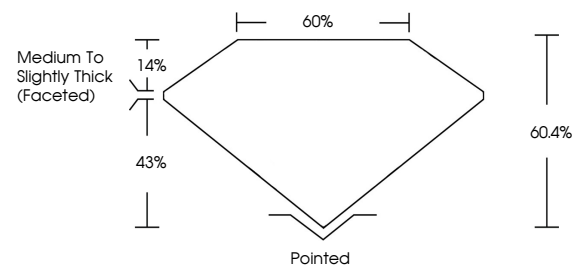
LG764690101
Report verification at igi.org



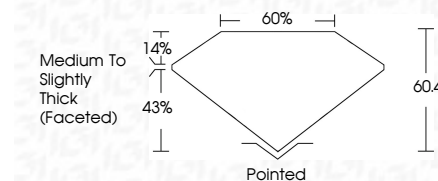
January 9, 2026
IGI Report Number **LG764690101**
Description **LABORATORY GROWN DIAMOND**
Shape and Cutting Style **OVAL BRILLIANT**
Measurements **16.44 X 11.44 X 6.91 MM**
GRADING RESULTS
Carat Weight **8.04 CARATS**
Color Grade **D**
Clarity Grade **VVS 2**

January 9, 2026
IGI Report Number **LG764690101**
Description **LABORATORY GROWN DIAMOND**
Shape and Cutting Style **OVAL BRILLIANT**
Measurements **16.44 X 11.44 X 6.91 MM**
GRADING RESULTS
Carat Weight **8.04 CARATS**
Color Grade **D**
Clarity Grade **VVS 2**

PROPORTIONS



Sample Image Used



ADDITIONAL GRADING INFORMATION

Polish **EXCELLENT**
Symmetry **EXCELLENT**
Fluorescence **NONE**
Inscription(s) **IGI LG764690101**

Comments: This Laboratory Grown Diamond was created by Chemical Vapor Deposition (CVD) growth process. Type IIa

ADDITIONAL GRADING INFORMATION

Polish **EXCELLENT**
Symmetry **EXCELLENT**
Fluorescence **NONE**
Inscription(s) **IGI LG764690101**
Comments: This Laboratory Grown Diamond was created by Chemical Vapor Deposition (CVD) growth process. Type IIa

COLOR

D E F G H I J Faint Very Light Light

CLARITY

FL	IF	VS ¹⁻²	VS ¹⁻²	SI ¹⁻²	I ¹⁻³
Flawless	Internally Flawless	Very Very Slightly Included	Very Slightly Included	Slightly Included	Included



January 9, 2026
IGI Report No **LG764690101**
OVAL BRILLIANT
16.44 X 11.44 X 6.91 MM
Carat Weight **8.04 CARATS**
Color Grade **D**
Clarity Grade **VVS 2**
Table **60.4%**
Girdle **60%**
Medium to Slightly Thick (Faceted)
Culet **Pointed**
Polish **EXCELLENT**
Symmetry **EXCELLENT**
Fluorescence **NONE**
Inscription(s) **IGI LG764690101**
Comments: This Laboratory Grown Diamond was created by Chemical Vapor Deposition (CVD) growth process. Type IIa