

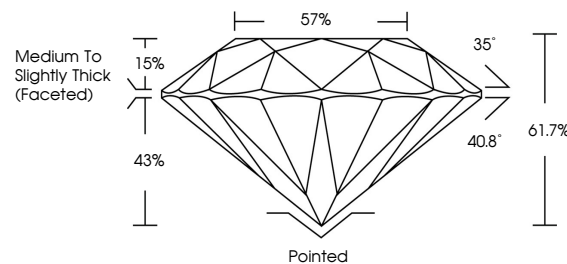


**ELECTRONIC COPY**

## LABORATORY GROWN DIAMOND REPORT

LG764690087  
Report verification at [lgi.org](https://lgi.org)

## PROPORTIONS



## CLARITY CHARACTERISTICS



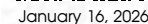
## KEY TO SYMBOLS

Red symbols indicate internal characteristics.  
Green symbols indicate external characteristics.



**www.igi.org**

## LABORATORY GROWN DIAMOND REPORT

IGI Report Number **LG764690087**Description **LABORATORY GROWN DIAMOND**Shape and Cutting Style **ROUND BRILLIANT**

Measurements 8.46 - 8.49 X 5.23 MM

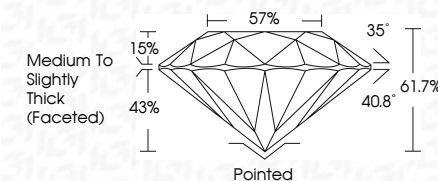
## GRADING RESULTS

Carat Weight **2.31 CARATS**

Color Grade D

Clarity Grade **INTERNALLY FLAWLESS**

Cut Grade **IDEAL**



### ADDITIONAL GRADING INFORMATION

Polish **EXCELLENT**Symmetry **EXCELLENT**Fluorescence **NONE**Inscription(s)  LG764690087

Comments: HEARTS & ARROWS

As Grown - No indication of post-growth treatment.

This Laboratory Grown Diamond was created by High Pressure High Temperature (HPHT) growth process.

Type II



© IGI 2020, International Gemological Institute

FD - 10 20



January 16, 2026  
GI Report No LG764690087  
ROUND BRILLIANT

<b>4.46 - 8.49 X 5.23 MM</b>		<b>2.31 CARATS</b>
Carat Weight		
Color Grade		
Clarity Grade	IF	
Cut Grade	IDEAL	
Depth	61.7%	57%
Table		
Girdle		
Culet		Pointed
Polish		EXCELLENT
Symmetry		EXCELLENT
Fluorescence		NONE
Report # 1574464092		

**Comments:**  
HEARTS & ARROWS  
As Grown - No indication of post-growth treatment.  
This Laboratory Grown Diamond was created by High Pressure High temperature (HPHT) growth process.