



**ELECTRONIC COPY**

LG764690083  
Report verification at igi.org



January 20, 2026

IGI Report Number **LG764690083**

Description **LABORATORY GROWN DIAMOND**

Shape and Cutting Style **ROUND BRILLIANT**

Measurements **8.15 - 8.19 X 5.00 MM**

**GRADING RESULTS**

Carat Weight **2.06 CARATS**

Color Grade **E**

Clarity Grade **INTERNALLY FLAWLESS**

Cut Grade **IDEAL**

January 20, 2026  
IGI Report Number **LG764690083**  
Description **LABORATORY GROWN DIAMOND**  
Shape and Cutting Style **ROUND BRILLIANT**  
Measurements **8.15 - 8.19 X 5.00 MM**

**GRADING RESULTS**

Carat Weight **2.06 CARATS**

Color Grade **E**

Clarity Grade **INTERNALLY FLAWLESS**

Cut Grade **IDEAL**

**ADDITIONAL GRADING INFORMATION**

Polish **EXCELLENT**

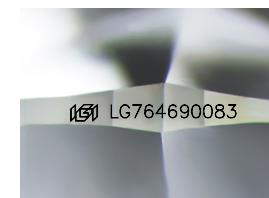
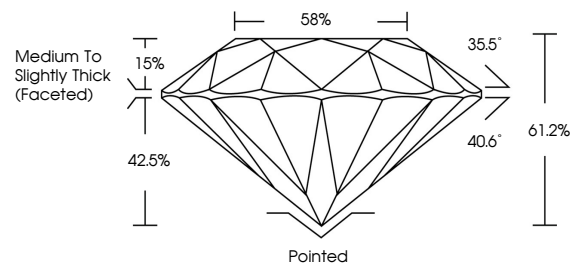
Symmetry **EXCELLENT**

Fluorescence **NONE**

Inscription(s) **LG764690083**

Comments: HEARTS & ARROWS  
As Grown - No indication of post-growth treatment.  
This Laboratory Grown Diamond was created by High Pressure High Temperature (HPHT) growth process.  
Type II

**PROPORTIONS**



Sample Image Used

**CLARITY CHARACTERISTICS**



**KEY TO SYMBOLS**

Red symbols indicate internal characteristics.  
Green symbols indicate external characteristics.

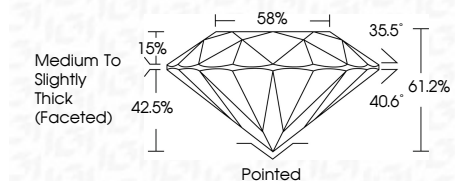


**COLOR**

D E F G H I J Faint Very Light Light

**CLARITY**

FL	IF	VS <sup>1-2</sup>	VS <sup>1-2</sup>	SI <sup>1-2</sup>	I <sup>1-3</sup>
Flawless	Internally Flawless	Very Very Slightly Included	Very Slightly Included	Slightly Included	Included



**ADDITIONAL GRADING INFORMATION**

Polish **EXCELLENT**

Symmetry **EXCELLENT**

Fluorescence **NONE**

Inscription(s) **LG764690083**

Comments: HEARTS & ARROWS  
As Grown - No indication of post-growth treatment.  
This Laboratory Grown Diamond was created by High Pressure High Temperature (HPHT) growth process.  
Type II



**IGI**



January 20, 2026	IGI Report No LG764690083	ROUND BRILLIANT	8.15 - 8.19 X 5.00 MM	2.06 CARATS	E	IF	IDEAL	61.2%	58%	Medium To Slightly Thick (Faceted)	Pointed	EXCELLENT	EXCELLENT	NONE	LG764690083
Cut	Polish	Symmetry	Fluorescence	Inscription(s)	Comments: HEARTS & ARROWS	As Grown - No indication of post-growth treatment.	This Laboratory Grown Diamond was created by High Pressure High Temperature (HPHT) growth process.	Type II							