

ELECTRONIC COPY

LABORATORY GROWN DIAMOND REPORT

January 16, 2026	
IGI Report Number	LG764689926
Description	LABORATORY GROWN DIAMOND
Shape and Cutting Style	ROUND BRILLIANT
Measurements	8.04 - 8.09 X 5.04 MM

GRADING RESULTS

Carat Weight	2.01 CARATS
Color Grade	D
Clarity Grade	VVS 2
Cut Grade	IDEAL

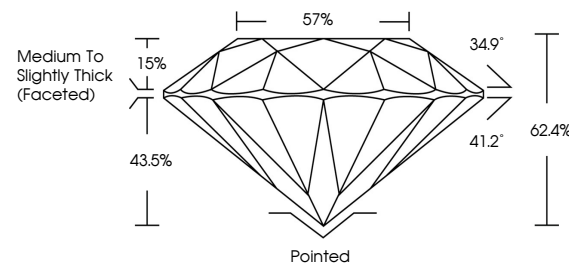
ADDITIONAL GRADING INFORMATION

Polish	EXCELLENT
Symmetry	EXCELLENT
Fluorescence	NONE
Inscription(s)	 LG764689926

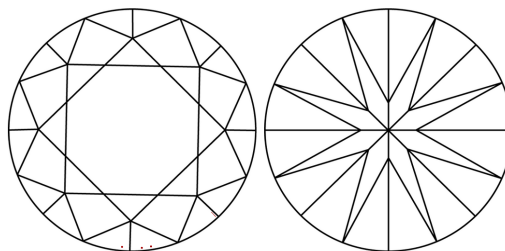
Comments: As Grown - No indication of post-growth treatment.
This Laboratory Grown Diamond was created by High Pressure High Temperature (HPHT) growth process.
Type II

LG764689926
Report verification at igi.org

PROPORTIONS

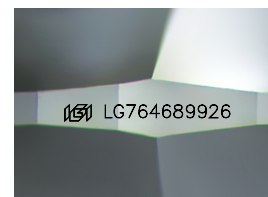


CLARITY CHARACTERISTICS



KEY TO SYMBOLS

Red symbols indicate internal characteristics.
Green symbols indicate external characteristics.



Sample Image Used

COLOR

D E F G H I J Faint Very Light Light

CLARITY

FL	IF	VVS ¹⁻²	VS ¹⁻²	SI ¹⁻²	I ¹⁻³
Flawless	Internally Flawless	Very Very Slightly Included	Very Slightly Included	Slightly Included	Included

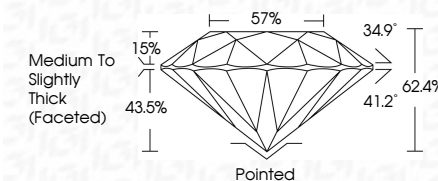
LABORATORY GROWN DIAMOND REPORT



January 16, 2026	
IGI Report Number	LG764689926
Description	LABORATORY GROWN DIAMOND
Shape and Cutting Style	ROUND BRILLIANT
Measurements	8.04 - 8.09 X 5.04 MM

GRADING RESULTS

Carat Weight	2.01 CARATS
Color Grade	D
Clarity Grade	VVS 2
Cut Grade	IDEAL



ADDITIONAL GRADING INFORMATION

Polish	EXCELLENT
Symmetry	EXCELLENT
Fluorescence	NONE
Inscription(s)	LG LG764689926
Comments: As Grown - No indication of post-growth treatment.	
This Laboratory Grown Diamond was created by High Pressure High Temperature (HPHT) growth process.	
Type II	



© IGI 2020, International Gemological Institute

FD - 10 20

January 16, 2026	IGI Report No. LG764689926	2.01 CARATS	
ROUND BRILLIANT			
3.04 - 3.05 X 5.04 MM			
Color Weight			
Color Grade			
Clarity Grade		VVS 2	
Cut Grade		IDEAL	
Depth		62.4%	
Table		57%	
Grade		Medium to Slightly Ink Faceted	
Culet		Pointed	
Polish		EXCELLENT	
Symmetry		EXCELLENT	
Fluorescence		NONE	
Inscription(s)		LG764689926	

Comments:
As Grown - No indication of post-growth treatment.
The Laboratory Grown Diamond was created by High Pressure High Temperature (HPHT) growth process.
Type IIb