

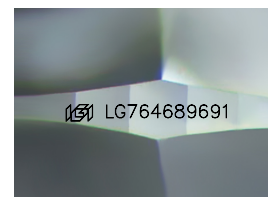
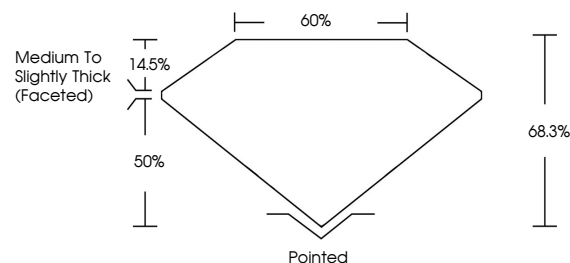


ELECTRONIC COPY

LABORATORY GROWN DIAMOND REPORT

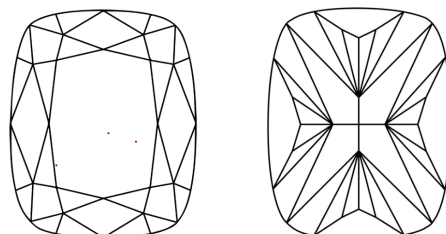
LG764689691
Report verification at igi.org

PROPORTIONS



Sample Image Used

CLARITY CHARACTERISTICS



KEY TO SYMBOLS

Red symbols indicate internal characteristics.
Green symbols indicate external characteristics.

COLOR

D E F G H I J Faint Very Light Light

CLARITY

FL	IF	VVS ¹⁻²	VS ¹⁻²	SI ¹⁻²	I ¹⁻³
Flawless	Internally Flawless	Very Very Slightly Included	Very Slightly Included	Slightly Included	Included

LABORATORY GROWN DIAMOND REPORT



January 13, 2026

IGI Report Number **LG764689691**Description **LABORATORY GROWN DIAMOND**

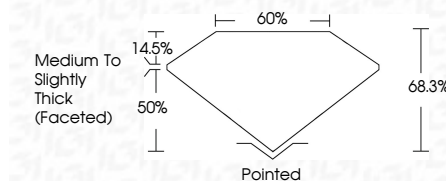
Shape and Cutting Style **CUSHION MODIFIED
BRILLIANT**

Measurements 10.20 X 7.96 X 5.44 MM

GRADING RESULTS

Carat Weight **3.50 CARATS**

Color Grade D

Clarity Grade WS 2

ADDITIONAL GRADING INFORMATION

Polish EXCELLENT

Symmetry **EXCELLENT**Fluorescence **NONE**Inscription(s)  LG764689691

Comments: This Laboratory Grown Diamond was created by Chemical Vapor Deposition (CVD) growth process.
Type IIa



© IGI 2020, International Gemological Institute

FD - 10 20

www.igi.org

January 13, 2026	Carat Weight	3.50 CARATS
SI Report No. LG74689691	Color Grade	D
CUSHION MODIFIED BRILLIANT	Clarity Grade	VVS 2
10.20 X 7.96 X 5.44 MM	Depth	68.3%
	Table	60%
	Girdle	Medium to Slightly Thick (Faceted)
	Culet	Pointed
	Polish	EXCELLENT
	Symmetry	EXCELLENT
	Fluorescence	NONE
	Inscriptions(s)	1691 LG74689691

Comments:
 The Laboratory Grown Diamond was
 produced using the Chemical Vapor Deposition
 (CVD) growth process.
 Type IIG