



ELECTRONIC COPY

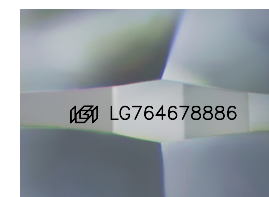
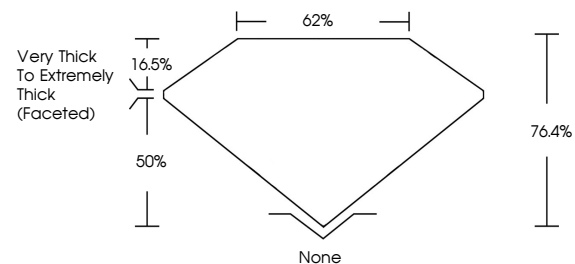
LG764678886
Report verification at igi.org



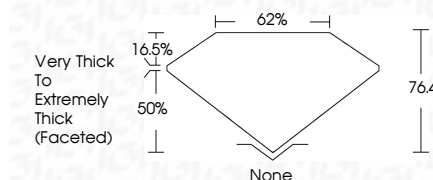
January 19, 2026
IGI Report Number **LG764678886**
Description **LABORATORY GROWN DIAMOND**
Shape and Cutting Style **SQUARE CUSHION MODIFIED BRILLIANT**
Measurements **6.38 X 6.39 X 4.88 MM**
GRADING RESULTS
Carat Weight **1.87 CARAT**
Color Grade **FANCY VIVID PINK**
Clarity Grade **VS 1**

January 19, 2026
IGI Report Number **LG764678886**
Description **LABORATORY GROWN DIAMOND**
Shape and Cutting Style **SQUARE CUSHION MODIFIED BRILLIANT**
Measurements **6.38 X 6.39 X 4.88 MM**
GRADING RESULTS
Carat Weight **1.87 CARAT**
Color Grade **FANCY VIVID PINK**
Clarity Grade **VS 1**

PROPORTIONS



Sample Image Used



ADDITIONAL GRADING INFORMATION

Polish **VERY GOOD**
Symmetry **VERY GOOD**
Fluorescence **SLIGHT**
Inscription(s) **IGI LG764678886**

Comments: This Laboratory Grown Diamond was created by Chemical Vapor Deposition (CVD) growth process. Indications of post-growth treatment.

ADDITIONAL GRADING INFORMATION

Polish **VERY GOOD**
Symmetry **VERY GOOD**
Fluorescence **SLIGHT**
Inscription(s) **IGI LG764678886**
Comments: This Laboratory Grown Diamond was created by Chemical Vapor Deposition (CVD) growth process. Indications of post-growth treatment.

COLOR

D E F G H I J Faint Very Light Light

CLARITY

| FL | IF | VS ¹⁻² | VS ¹⁻² | SI ¹⁻² | I ¹⁻³ |
|----------|---------------------|-----------------------------|------------------------|-------------------|------------------|
| Flawless | Internally Flawless | Very Very Slightly Included | Very Slightly Included | Slightly Included | Included |



IGI



January 19, 2026
IGI Report No **LG764678886**
SQUARE CUSHION MODIFIED BRILLIANT
6.38 X 6.39 X 4.88 MM
Carat Weight **1.87 CARAT**
Color Grade **FANCY VIVID PINK**
Clarity Grade **VS 1**
Depth **76.4%**
Table **62%**
Girdle **Very Thick to Extremely Thick (Faceted)**
Culet **None**
Polish **VERY GOOD**
Symmetry **VERY GOOD**
Fluorescence **SLIGHT**
Inscription(s) **IGI LG764678886**
Comments: This Laboratory Grown Diamond was created by Chemical Vapor Deposition (CVD) growth process. Indications of post-growth treatment.