

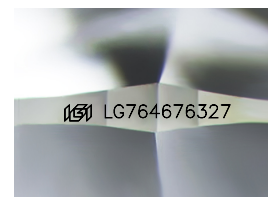
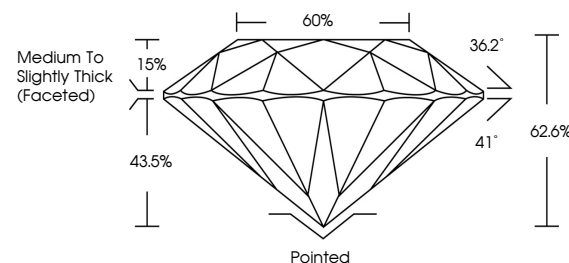


**ELECTRONIC COPY**

## LABORATORY GROWN DIAMOND REPORT

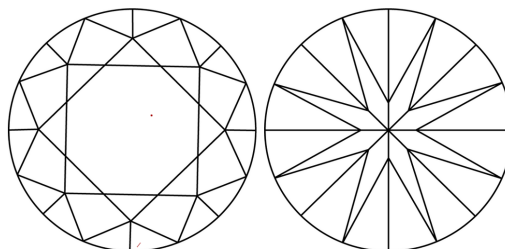
LG764676327  
Report verification at [igi.org](https://igi.org)

## PROPORTIONS



Sample Image Used

## CLARITY CHARACTERISTICS



## KEY TO SYMBOLS

Red symbols indicate internal characteristics.  
Green symbols indicate external characteristics.

## COLOR

D E F G H I J Faint Very Light Light

## CLARITY

| FL       | IF                  | VVS <sup>1-2</sup>          | VS <sup>1-2</sup>      | SI <sup>1-2</sup> | I <sup>1-3</sup> |
|----------|---------------------|-----------------------------|------------------------|-------------------|------------------|
| Flawless | Internally Flawless | Very Very Slightly Included | Very Slightly Included | Slightly Included | Included         |

## LABORATORY GROWN DIAMOND REPORT



January 22, 2026

IGI Report Number LG764676327

Description **LABORATORY GROWN DIAMOND**Shape and Cutting Style **ROUND BRILLIANT**

Measurements 8.93 - 8.98 X 5.61 MM

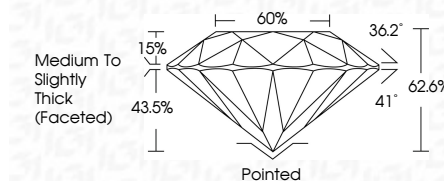
## GRADING RESULTS

Carat Weight **2.82 CARATS**

Color Grade

Clarity Grade WS 1

Cut Grade **EXCELLENT**



### ADDITIONAL GRADING INFORMATION

Polish **EXCELLENT**Symmetry **EXCELLENT**Fluorescence NONEInscription(s)  LG764676327

Comments: This Laboratory Grown Diamond was created by Chemical Vapor Deposition (CVD) growth process.  
Type IIa



© IGI 2020, International Gemological Institute

FD - 10 20



THIS DOCUMENT WAS PRODUCED WITH THE FOLLOWING SECURITY MEASURES: SPECIAL DOCUMENT PAPER, INK SCREENS, WATERMARK, BACKGROUND DESIGNS, HOLOGRAM AND OTHER SECURITY FEATURES NOT LISTED AND DO EXCEED DOCUMENT SECURITY INDUSTRY GUIDELINES

**www.igi.org**

January 22, 2026  
GI Report No LG764676327  
ROUND BRILLIANT

|               |                                    |
|---------------|------------------------------------|
| Color         | 2.82 CARATS                        |
| Carat Weight  | VS1                                |
| Color Grade   | EXCELLENT                          |
| Clarity Grade | 62.6%                              |
| Depth         | 60%                                |
| Table         | Medium to Slightly Thick (Faceted) |
| Girdle        | Pointed                            |
| Culet         | EXCELLENT                          |
| Polish        | EXCELLENT                          |
| Symmetry      | NONE                               |
| Fluorescence  |                                    |

**Comments:**  
This Laboratory Grown Diamond was  
created by Chemical Vapor Deposition  
(CVD) growth process.