



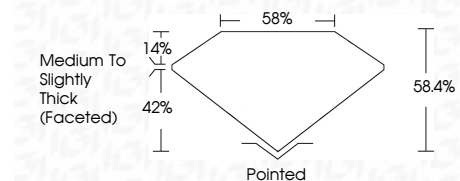
ELECTRONIC COPY

LG764674795
Report verification at igi.org



January 13, 2026
IGI Report Number **LG764674795**
Description **LABORATORY GROWN DIAMOND**
Shape and Cutting Style **HEART BRILLIANT**
Measurements **7.04 X 8.18 X 4.78 MM**

GRADING RESULTS
Carat Weight **1.54 CARAT**
Color Grade **D**
Clarity Grade **VS 1**



ADDITIONAL GRADING INFORMATION
Polish **EXCELLENT**
Symmetry **EXCELLENT**
Fluorescence **NONE**
Inscription(s) **IGI LG764674795**
Comments: This Laboratory Grown Diamond was created by Chemical Vapor Deposition (CVD) growth process. Type IIa



January 13, 2026
IGI Report No **LG764674795**
HEART BRILLIANT
7.04 X 8.18 X 4.78 MM
1.54 CARAT
D
VS 1
58.4%
42%
14%
Medium to Slightly Thick (Faceted)
Pointed
EXCELLENT
EXCELLENT
NONE
IGI LG764674795
Comments: This Laboratory Grown Diamond was created by Chemical Vapor Deposition (CVD) growth process. Type IIa

LABORATORY GROWN DIAMOND REPORT

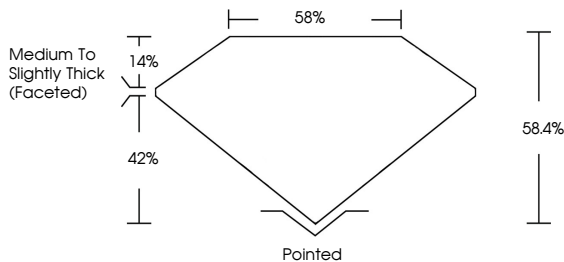
January 13, 2026
IGI Report Number **LG764674795**
Description **LABORATORY GROWN DIAMOND**
Shape and Cutting Style **HEART BRILLIANT**
Measurements **7.04 X 8.18 X 4.78 MM**

GRADING RESULTS
Carat Weight **1.54 CARAT**
Color Grade **D**
Clarity Grade **VS 1**

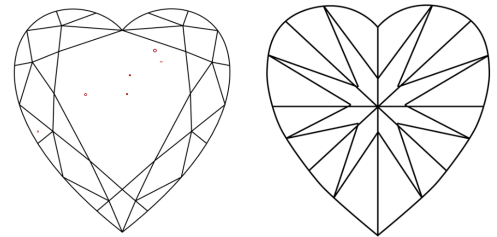
ADDITIONAL GRADING INFORMATION
Polish **EXCELLENT**
Symmetry **EXCELLENT**
Fluorescence **NONE**
Inscription(s) **IGI LG764674795**

Comments: This Laboratory Grown Diamond was created by Chemical Vapor Deposition (CVD) growth process. Type IIa

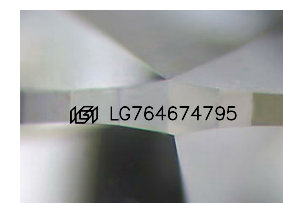
PROPORTIONS



CLARITY CHARACTERISTICS



KEY TO SYMBOLS
Red symbols indicate internal characteristics.
Green symbols indicate external characteristics.



Sample Image Used

COLOR

D	E	F	G	H	I	J	Faint	Very Light	Light
---	---	---	---	---	---	---	-------	------------	-------

CLARITY

FL	IF	VS ¹⁻²	VS ¹⁻²	SI ¹⁻²	I ¹⁻³
Flawless	Internally Flawless	Very Very Slightly Included	Very Slightly Included	Slightly Included	Included

