

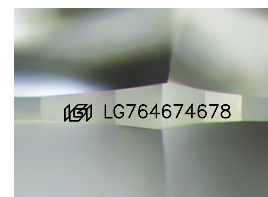
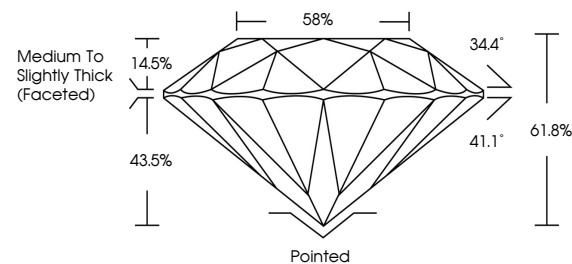


**ELECTRONIC COPY**

## LABORATORY GROWN DIAMOND REPORT

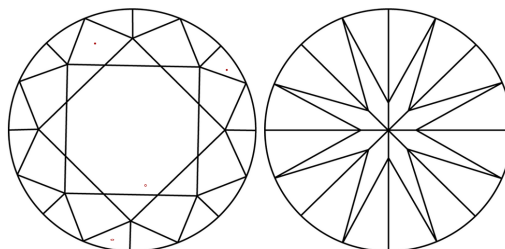
LG764674678  
Report verification at [igi.org](https://igi.org)

## PROPORTIONS



Sample Image Used

## CLARITY CHARACTERISTICS



### KEY TO SYMBOLS

Red symbols indicate internal characteristics.  
Green symbols indicate external characteristics.

## COLOR

D E F G H I J Faint Very Light Light

## CLARITY

| FL       | IF                  | VVS <sup>1-2</sup>          | VS <sup>1-2</sup>      | SI <sup>1-2</sup> | I <sup>1-3</sup> |
|----------|---------------------|-----------------------------|------------------------|-------------------|------------------|
| Flawless | Internally Flawless | Very Very Slightly Included | Very Slightly Included | Slightly Included | Included         |

## LABORATORY GROWN DIAMOND REPORT



January 12, 2026

IGI Report Number **LG764674678**Description **LABORATORY GROWN DIAMOND**Shape and Cutting Style **ROUND BRILLIANT**

|              |                       |
|--------------|-----------------------|
| Measurements | 8.15 - 8.22 X 5.05 MM |
|--------------|-----------------------|

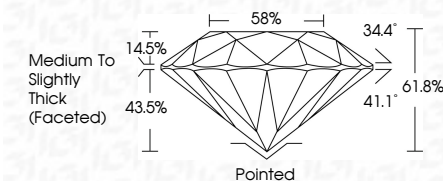
## GRADING RESULTS

Carat Weight **2.08 CARATS**

Color Grade E

Clarity Grade VS 1

Cut Grade **IDEAL**



### ADDITIONAL GRADING INFORMATION

Polish **EXCELLENT**Symmetry **EXCELLENT**Fluorescence **NONE**Inscription(s)  LG764674678

Comments: This Laboratory Grown Diamond was created by Chemical Vapor Deposition (CVD) growth process.  
Type IIa



© IGI 2020, International Gemological Institute

FD - 10 20



THIS DOCUMENT WAS PRODUCED WITH THE FOLLOWING SECURITY MEASURES: SPECIAL DOCUMENT PAPER, INK SCREENS, WATERMARK, BACKGROUND DESIGNS, HOLOGRAM AND OTHER SECURITY FEATURES NOT LISTED AND DO EXCEED DOCUMENT SECURITY INDUSTRY GUIDELINES

**www.igi.org**

January 12, 2026  
IGI Report No LG764674678  
ROUND BRILLIANT

|               |                                    |
|---------------|------------------------------------|
| Carat Weight  | 2.08 CARATS                        |
| Color Grade   | E                                  |
| Clarity Grade | VS 1                               |
| Cut Grade     | IDPAA                              |
| Depth         | 61.6%                              |
| Table         | 58%                                |
| Girdle        | Medium to Slightly Thick (Faceted) |
| Culet         | Pointed                            |
| Polish        | EXCELLENT                          |
| Symmetry      | EXCELLENT                          |
| Fluorescence  | NONE                               |
| Report #      | 1C274647675                        |

**Comments:**  
This Laboratory Grown Diamond was created by Chemical Vapor Deposition (CVD) growth process.