



**INTERNATIONAL
GEMOLOGICAL
INSTITUTE**

ELECTRONIC COPY

LG764673806
Report verification at igi.org

LABORATORY GROWN DIAMOND REPORT



January 9, 2026

IGI Report Number **LG764673806**

Description	LABORATORY GROWN DIAMOND
-------------	--------------------------

Shape and Cutting Style **OVAL BRILLIANT**

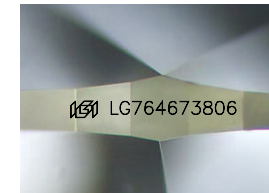
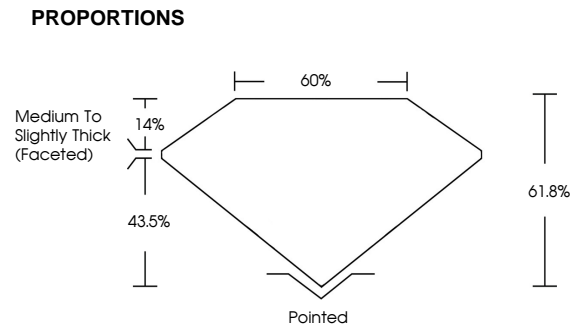
Measurements 10.37 X 7.18 X 4.44 MM

GRADING RESULTS

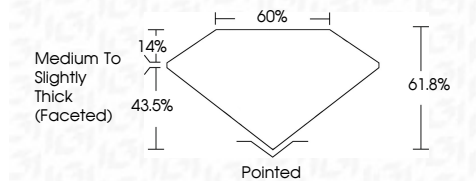
Carat Weight **2.04 CARATS**

Color Grade	E
-------------	---

Clarity Grade **VS 1**



Sample Image Used



COLOR

D E F G H I J Faint Very Light Light

CLARITY

FL IF WS¹⁻² VS¹⁻² S¹⁻² |¹⁻³

Flawless	Internally Flawless	Very Very Slightly Included	Very Slightly Included	Slightly Included	Included
----------	---------------------	-----------------------------	------------------------	-------------------	----------



© IGI 2020, International Gemological Institute

FD - 10 20



IGI

January 9, 2026
GI Report No LG764673806
COVAL BRILLIANT

LOVAL BRILLIANT	10.37 X 7.18 X 4.44 MM	2.04 CARATS	E	VS 1	61.8%	60%	Medium To Slightly Thick Facetted	Pointed	EXCELLENT	EXCELLENT	NONE	I991 LG764073906
	Carat Weight			Clarity Grade	Depth	Table	Girdle	Culet	Polish	Symmetry	Fluorescence Description(s)	

Comments:
This Laboratory Grown Diamond was created by Chemical Vapor Deposition (CVD) growth process.
Type IIa

www.igi.org



THIS DOCUMENT WAS PRODUCED WITH THE FOLLOWING SECURITY MEASURES: SPECIAL DOCUMENT PAPER, INK SCREENS, WATERMARK, BACKGROUND DESIGNS, HOLOGRAM AND OTHER SECURITY FEATURES NOT LISTED AND DO EXCEED DOCUMENT SECURITY INDUSTRY GUIDELINES