



**ELECTRONIC COPY**

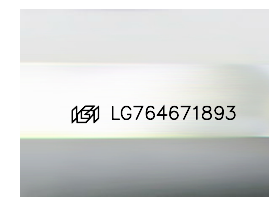
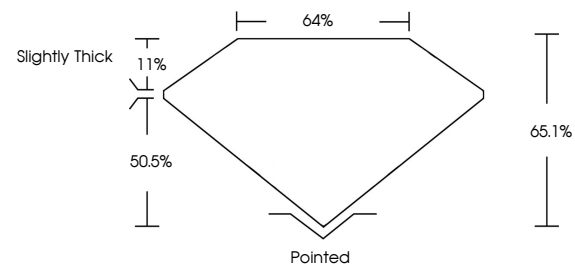
LG764671893  
Report verification at igi.org



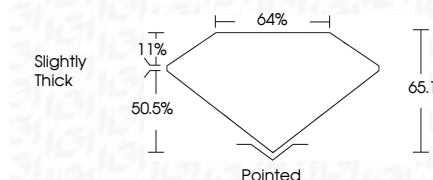
February 2, 2026  
IGI Report Number **LG764671893**  
Description **LABORATORY GROWN DIAMOND**  
Shape and Cutting Style **CUT CORNERED  
RECTANGULAR MODIFIED  
BRILLIANT**  
Measurements **9.91 X 7.37 X 4.80 MM**  
**GRADING RESULTS**  
Carat Weight **3.05 CARATS**  
Color Grade **G**  
Clarity Grade **VVS 2**

February 2, 2026  
IGI Report Number **LG764671893**  
Description **LABORATORY GROWN DIAMOND**  
Shape and Cutting Style **CUT CORNERED RECTANGULAR  
MODIFIED BRILLIANT**  
Measurements **9.91 X 7.37 X 4.80 MM**  
**GRADING RESULTS**  
Carat Weight **3.05 CARATS**  
Color Grade **G**  
Clarity Grade **VVS 2**

**PROPORTIONS**



Sample Image Used



**ADDITIONAL GRADING INFORMATION**

Polish **EXCELLENT**  
Symmetry **EXCELLENT**  
Fluorescence **NONE**  
Inscription(s) **IGI LG764671893**

Comments: This Laboratory Grown Diamond was created by Chemical Vapor Deposition (CVD) growth process.  
Type IIa

**ADDITIONAL GRADING INFORMATION**

Polish **EXCELLENT**  
Symmetry **EXCELLENT**  
Fluorescence **NONE**  
Inscription(s) **IGI LG764671893**  
Comments: This Laboratory Grown Diamond was created by Chemical Vapor Deposition (CVD) growth process.  
Type IIa

**COLOR**

D E F G H I J Faint Very Light Light

**CLARITY**

FL	IF	VVS <sup>1-2</sup>	VS <sup>1-2</sup>	SI <sup>1-2</sup>	I <sup>1-3</sup>
Flawless	Internally Flawless	Very Very Slightly Included	Very Slightly Included	Slightly Included	Included



**IGI**



February 2, 2026  
IGI Report No. LG764671893  
CUT CORNERED RECT. MODIFIED BRILLIANT  
9.91 X 7.37 X 4.80 MM  
3.05 CARATS  
G  
VVS 2  
65.1%  
50.5%  
Slightly Thick  
Pointed  
EXCELLENT  
EXCELLENT  
NONE  
IGI LG764671893  
Comments: This Laboratory Grown Diamond was created by Chemical Vapor Deposition (CVD) growth process.  
Type IIa