



ELECTRONIC COPY

LABORATORY GROWN DIAMOND REPORT

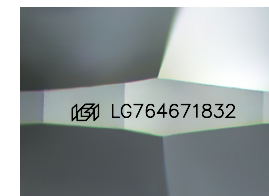
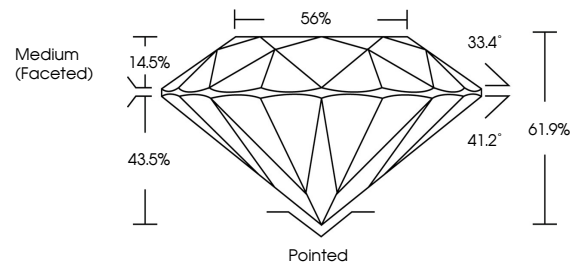
February 2, 2026
IGI Report Number LG764671832
Description LABORATORY GROWN DIAMOND
Shape and Cutting Style ROUND BRILLIANT
Measurements 9.28 - 9.31 X 5.75 MM
GRADING RESULTS
Carat Weight 3.04 CARATS
Color Grade H
Clarity Grade VVS 2
Cut Grade IDEAL

ADDITIONAL GRADING INFORMATION

Polish EXCELLENT
Symmetry EXCELLENT
Fluorescence NONE
Inscription(s) LG764671832

Comments: HEARTS & ARROWS
This Laboratory Grown Diamond was created by Chemical Vapor Deposition (CVD) growth process. Type IIa

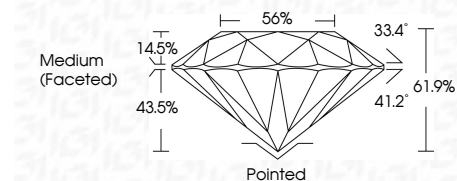
PROPORTIONS



Sample Image Used



February 2, 2026
IGI Report Number LG764671832
Description LABORATORY GROWN DIAMOND
Shape and Cutting Style ROUND BRILLIANT
Measurements 9.28 - 9.31 X 5.75 MM
GRADING RESULTS
Carat Weight 3.04 CARATS
Color Grade H
Clarity Grade VVS 2
Cut Grade IDEAL



COLOR

D E F G H I J Faint Very Light Light

CLARITY

FL IF VS 1-2 VS 1-2 SI 1-2 I 1-3
Flawless Internally Flawless Very Very Slightly Included Very Slightly Included Slightly Included Included

ADDITIONAL GRADING INFORMATION

Polish EXCELLENT
Symmetry EXCELLENT
Fluorescence NONE
Inscription(s) LG764671832
Comments: HEARTS & ARROWS
This Laboratory Grown Diamond was created by Chemical Vapor Deposition (CVD) growth process. Type IIa



IGI

Summary of report details including date, report number, description, measurements, grading results, and additional information.