



ELECTRONIC COPY

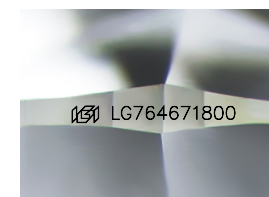
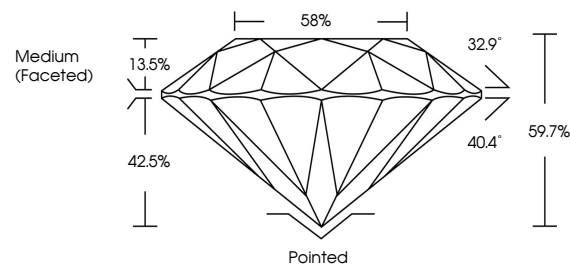
LG764671800
Report verification at igi.org



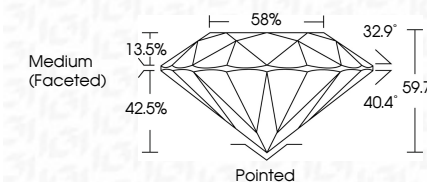
February 2, 2026
IGI Report Number **LG764671800**
Description **LABORATORY GROWN DIAMOND**
Shape and Cutting Style **ROUND BRILLIANT**
Measurements **9.30 - 9.37 X 5.57 MM**
GRADING RESULTS
Carat Weight **2.97 CARATS**
Color Grade **G**
Clarity Grade **VVS 1**
Cut Grade **IDEAL**

February 2, 2026
IGI Report Number **LG764671800**
Description **LABORATORY GROWN DIAMOND**
Shape and Cutting Style **ROUND BRILLIANT**
Measurements **9.30 - 9.37 X 5.57 MM**
GRADING RESULTS
Carat Weight **2.97 CARATS**
Color Grade **G**
Clarity Grade **VVS 1**
Cut Grade **IDEAL**

PROPORTIONS



Sample Image Used



ADDITIONAL GRADING INFORMATION
Polish **EXCELLENT**
Symmetry **EXCELLENT**
Fluorescence **NONE**
Inscription(s) **IGI LG764671800**

Comments: This Laboratory Grown Diamond was created by Chemical Vapor Deposition (CVD) growth process. Type IIa

COLOR

D E F G H I J Faint Very Light Light

CLARITY

FL	IF	VVS ¹⁻²	VS ¹⁻²	SI ¹⁻²	I ¹⁻³
Flawless	Internally Flawless	Very Very Slightly Included	Very Slightly Included	Slightly Included	Included

ADDITIONAL GRADING INFORMATION

Polish **EXCELLENT**
Symmetry **EXCELLENT**
Fluorescence **NONE**
Inscription(s) **IGI LG764671800**
Comments: This Laboratory Grown Diamond was created by Chemical Vapor Deposition (CVD) growth process. Type IIa



IGI



February 2, 2026
IGI Report No LG764671800
ROUND BRILLIANT
9.30 - 9.37 X 5.57 MM
2.97 CARATS
Color Grade **G**
Clarity Grade **VVS 1**
Depth **IDEAL**
Table **58%**
Girdle **Medium (Faceted)**
Culet **Pointed**
Polish **EXCELLENT**
Symmetry **EXCELLENT**
Fluorescence **NONE**
Inscriptions(s) **IGI LG764671800**
Comments: This Laboratory Grown Diamond was created by Chemical Vapor Deposition (CVD) growth process. Type IIa