



**ELECTRONIC COPY**

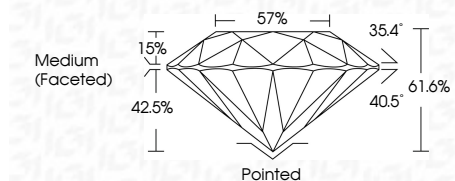
LG764671701  
Report verification at [igi.org](http://igi.org)



January 29, 2026  
IGI Report Number **LG764671701**  
Description **LABORATORY GROWN DIAMOND**  
Shape and Cutting Style **ROUND BRILLIANT**  
Measurements **8.05 - 8.13 X 4.97 MM**

**GRADING RESULTS**

Carat Weight **2.00 CARATS**  
Color Grade **G**  
Clarity Grade **VVS 1**  
Cut Grade **IDEAL**



**ADDITIONAL GRADING INFORMATION**

Polish **EXCELLENT**  
Symmetry **EXCELLENT**  
Fluorescence **NONE**  
Inscription(s) **IGI LG764671701**  
Comments: This Laboratory Grown Diamond was created by Chemical Vapor Deposition (CVD) growth process. Type IIa

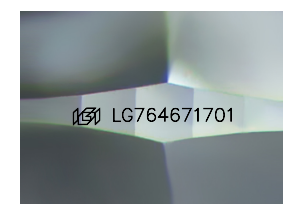
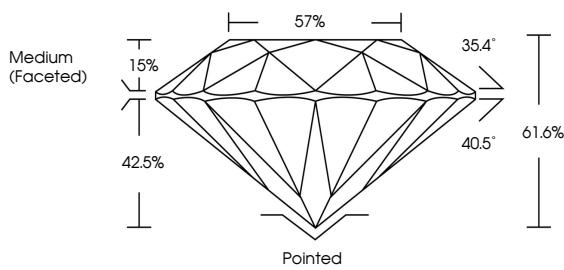


January 29, 2026  
IGI Report No **LG764671701**  
**ROUND BRILLIANT**  
8.05 - 8.13 X 4.97 MM  
Carat Weight **2.00 CARATS**  
Color Grade **G**  
Clarity Grade **VVS 1**  
Cut Grade **IDEAL**  
Depth **61.6%**  
Table **15%**  
Girdle **57%**  
Medium (Faceted)  
Culet **Pointed**  
Polish **EXCELLENT**  
Symmetry **EXCELLENT**  
Fluorescence **NONE**  
Inscription(s) **IGI LG764671701**  
Comments: This Laboratory Grown Diamond was created by Chemical Vapor Deposition (CVD) growth process. Type IIa

January 29, 2026  
IGI Report Number **LG764671701**  
Description **LABORATORY GROWN DIAMOND**  
Shape and Cutting Style **ROUND BRILLIANT**  
Measurements **8.05 - 8.13 X 4.97 MM**  
**GRADING RESULTS**  
Carat Weight **2.00 CARATS**  
Color Grade **G**  
Clarity Grade **VVS 1**  
Cut Grade **IDEAL**

**ADDITIONAL GRADING INFORMATION**  
Polish **EXCELLENT**  
Symmetry **EXCELLENT**  
Fluorescence **NONE**  
Inscription(s) **IGI LG764671701**  
Comments: This Laboratory Grown Diamond was created by Chemical Vapor Deposition (CVD) growth process. Type IIa

**PROPORTIONS**



Sample Image Used

**COLOR**

D E F G H I J Faint Very Light Light

**CLARITY**

FL	IF	VS <sup>1-2</sup>	VS <sup>1-2</sup>	SI <sup>1-2</sup>	I <sup>1-3</sup>
Flawless	Internally Flawless	Very Very Slightly Included	Very Slightly Included	Slightly Included	Included

