



**ELECTRONIC COPY**

LG764671673  
Report verification at igi.org



January 29, 2026

IGI Report Number **LG764671673**

Description **LABORATORY GROWN DIAMOND**

Shape and Cutting Style **ROUND BRILLIANT**

Measurements **7.47 - 7.51 X 4.48 MM**

**GRADING RESULTS**

Carat Weight **1.53 CARAT**

Color Grade **F**

Clarity Grade **VVS 1**

Cut Grade **IDEAL**

January 29, 2026

IGI Report Number **LG764671673**

Description **LABORATORY GROWN DIAMOND**

Shape and Cutting Style **ROUND BRILLIANT**

Measurements **7.47 - 7.51 X 4.48 MM**

**GRADING RESULTS**

Carat Weight **1.53 CARAT**

Color Grade **F**

Clarity Grade **VVS 1**

Cut Grade **IDEAL**

**ADDITIONAL GRADING INFORMATION**

Polish **EXCELLENT**

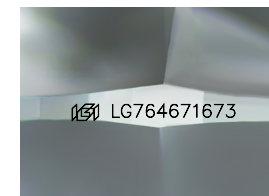
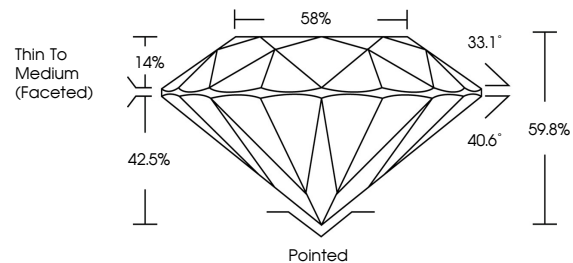
Symmetry **EXCELLENT**

Fluorescence **NONE**

Inscription(s) **IGI LG764671673**

Comments: This Laboratory Grown Diamond was created by Chemical Vapor Deposition (CVD) growth process. Type IIa

**PROPORTIONS**



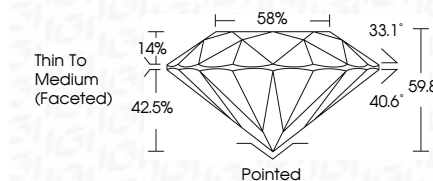
Sample Image Used

**COLOR**

D E F G H I J Faint Very Light Light

**CLARITY**

FL	IF	VVS <sup>1-2</sup>	VS <sup>1-2</sup>	SI <sup>1-2</sup>	I <sup>1-3</sup>
Flawless	Internally Flawless	Very Very Slightly Included	Very Slightly Included	Slightly Included	Included



**ADDITIONAL GRADING INFORMATION**

Polish **EXCELLENT**

Symmetry **EXCELLENT**

Fluorescence **NONE**

Inscription(s) **IGI LG764671673**

Comments: This Laboratory Grown Diamond was created by Chemical Vapor Deposition (CVD) growth process. Type IIa



January 29, 2026  
IGI Report No LG764671673  
ROUND BRILLIANT

7.47 - 7.51 X 4.48 MM

1.53 CARAT  
F

Color Grade  
VVS 1  
IDEAL

Clarity Grade  
VVS 1  
IDEAL

Depth  
59.8%

Table  
14%

Girdle  
58%

Thin To Medium (Faceted)

Culet  
Pointed

Polish  
EXCELLENT

Symmetry  
EXCELLENT

Fluorescence  
NONE

Inscription(s)  
IGI LG764671673

Comments: This Laboratory Grown Diamond was created by Chemical Vapor Deposition (CVD) growth process. Type IIa