



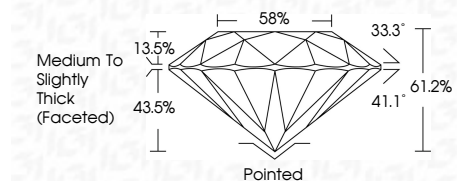
ELECTRONIC COPY

LG764671670
Report verification at igi.org



January 29, 2026
IGI Report Number **LG764671670**
Description **LABORATORY GROWN DIAMOND**
Shape and Cutting Style **ROUND BRILLIANT**
Measurements **7.36 - 7.39 X 4.52 MM**

GRADING RESULTS
Carat Weight **1.51 CARAT**
Color Grade **H**
Clarity Grade **VVS 1**
Cut Grade **IDEAL**

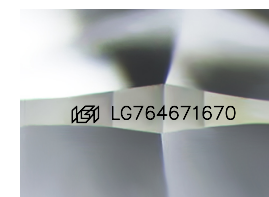
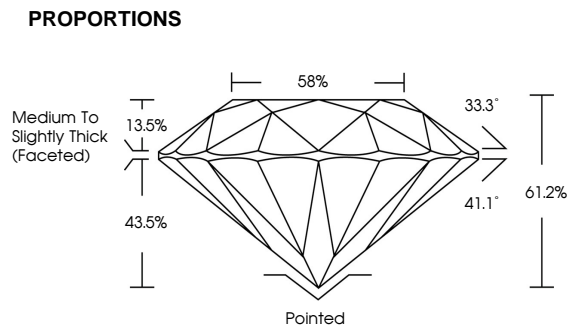


ADDITIONAL GRADING INFORMATION
Polish **EXCELLENT**
Symmetry **EXCELLENT**
Fluorescence **NONE**
Inscription(s) **IGI LG764671670**
Comments: This Laboratory Grown Diamond was created by Chemical Vapor Deposition (CVD) growth process. Type IIa



January 29, 2026
IGI Report No LG764671670
ROUND BRILLIANT
Carat Weight **1.51 CARAT**
Color Grade **H**
Clarity Grade **VVS 1**
Cut Grade **IDEAL**
Depth **61.2%**
Table **58%**
Girdle **Medium To Slightly Thick (Faceted)**
Culet **Pointed**
Polish **EXCELLENT**
Symmetry **EXCELLENT**
Fluorescence **NONE**
Inscriptions(s) **IGI LG764671670**
Comments: This Laboratory Grown Diamond was created by Chemical Vapor Deposition (CVD) growth process. Type IIa

January 29, 2026
IGI Report Number **LG764671670**
Description **LABORATORY GROWN DIAMOND**
Shape and Cutting Style **ROUND BRILLIANT**
Measurements **7.36 - 7.39 X 4.52 MM**
GRADING RESULTS
Carat Weight **1.51 CARAT**
Color Grade **H**
Clarity Grade **VVS 1**
Cut Grade **IDEAL**



Sample Image Used

COLOR

D	E	F	G	H	I	J	Faint	Very Light	Light
---	---	---	---	---	---	---	-------	------------	-------

CLARITY

FL	IF	VVS ¹⁻²	VS ¹⁻²	SI ¹⁻²	I ¹⁻³
Flawless	Internally Flawless	Very Very Slightly Included	Very Slightly Included	Slightly Included	Included

