

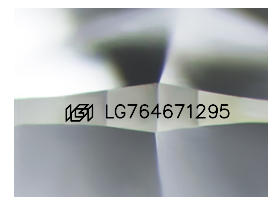
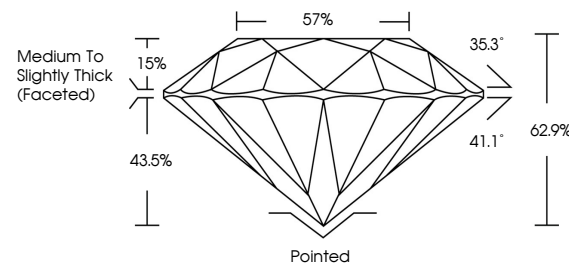


**ELECTRONIC COPY**

## LABORATORY GROWN DIAMOND REPORT

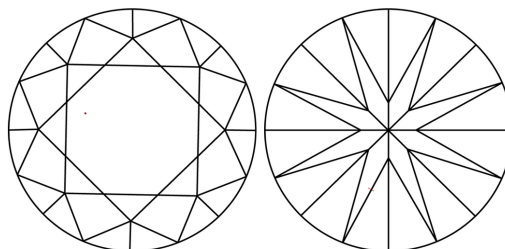
LG764671295  
Report verification at [igi.org](https://igi.org)

## PROPORTIONS



Sample Image Used

## CLARITY CHARACTERISTICS



### KEY TO SYMBOLS

Red symbols indicate internal characteristics.  
Green symbols indicate external characteristics.

## COLOR

D E F G H I J Faint Very Light Light

## CLARITY

| FL       | IF                  | VVS <sup>1-2</sup>          | VS <sup>1-2</sup>      | SI <sup>1-2</sup> | I <sup>1-3</sup> |
|----------|---------------------|-----------------------------|------------------------|-------------------|------------------|
| Flawless | Internally Flawless | Very Very Slightly Included | Very Slightly Included | Slightly Included | Included         |

## LABORATORY GROWN DIAMOND REPORT



January 10, 2026

IGI Report Number **LG764671295**Description **LABORATORY GROWN DIAMOND**Shape and Cutting Style **ROUND BRILLIANT**

Measurements 9.17 - 9.21 X 5.78 MM

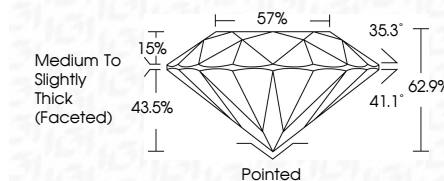
## GRADING RESULTS

Carat Weight **3.04 CARATS**

|             |   |
|-------------|---|
| Color Grade | D |
|-------------|---|

Clarity Grade VS 1

Cut Grade **EXCELLENT**



### ADDITIONAL GRADING INFORMATION

Polish **EXCELLENT**Symmetry **EXCELLENT**Fluorescence **NONE**Inscription(s)  LG764671295

Comments: This Laboratory Grown Diamond was created by Chemical Vapor Deposition (CVD) growth process.  
Type IIa



© IGI 2020, International Gemological Institute

FD - 10 20



THIS DOCUMENT WAS PRODUCED WITH THE FOLLOWING SECURITY MEASURES: SPECIAL DOCUMENT PAPER, INK SCREENS, WATERMARK, BACKGROUND DESIGNS, HOLOGRAM AND OTHER SECURITY FEATURES NOT LISTED AND DO EXCEED DOCUMENT SECURITY INDUSTRY GUIDELINES

**www.igi.org**

January 10, 2026  
IGI Report No LG764671295  
ROUND BRILLIANT

|                               |                                    |
|-------------------------------|------------------------------------|
| <b>19.17 - 9.21 X 5.78 MM</b> |                                    |
| Carat Weight                  | 3.04 CARATS                        |
| Color Grade                   | D                                  |
| Clarity Grade                 | VS 1                               |
| Cut Grade                     | EXCELLENT                          |
| Depth                         | 62.9%                              |
| Table                         | 57%                                |
| Girdle                        | Medium To Slightly Thick (Faceted) |
| Culet                         | Pointed                            |
| Polish                        | EXCELLENT                          |
| Symmetry                      | EXCELLENT                          |
| Fluorescence                  | NONE                               |

**Comments:**  
This Laboratory Grown Diamond was created by Chemical Vapor Deposition (CVD) growth process.