



ELECTRONIC COPY

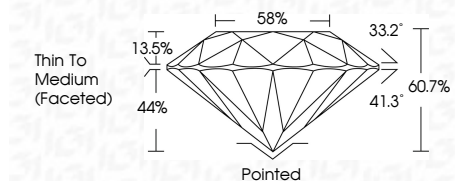
LG764670835
Report verification at igi.org



January 17, 2026
IGI Report Number **LG764670835**
Description **LABORATORY GROWN DIAMOND**
Shape and Cutting Style **ROUND BRILLIANT**
Measurements **6.56 - 6.59 X 3.99 MM**

GRADING RESULTS

Carat Weight **1.04 CARAT**
Color Grade **F**
Clarity Grade **VS 2**
Cut Grade **IDEAL**



ADDITIONAL GRADING INFORMATION

Polish **EXCELLENT**
Symmetry **EXCELLENT**
Fluorescence **NONE**
Inscription(s) **IGI LG764670835**
Comments: This Laboratory Grown Diamond was created by Chemical Vapor Deposition (CVD) growth process. Type IIa



January 17, 2026
IGI Report No LG764670835
ROUND BRILLIANT
6.56 - 6.59 X 3.99 MM
1.04 CARAT
F
VS 2
IDEAL
60.7%
58%
Thin To Medium (Faceted)
Pointed
EXCELLENT
EXCELLENT
NONE
IGI LG764670835
Comments: This Laboratory Grown Diamond was created by Chemical Vapor Deposition (CVD) growth process. Type IIa

January 17, 2026
IGI Report Number **LG764670835**
Description **LABORATORY GROWN DIAMOND**
Shape and Cutting Style **ROUND BRILLIANT**
Measurements **6.56 - 6.59 X 3.99 MM**

GRADING RESULTS

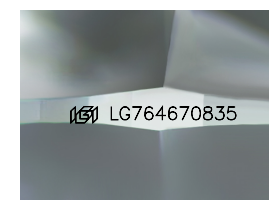
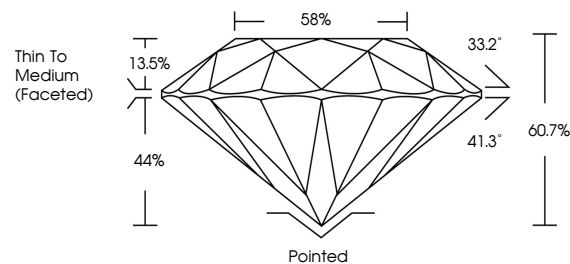
Carat Weight **1.04 CARAT**
Color Grade **F**
Clarity Grade **VS 2**
Cut Grade **IDEAL**

ADDITIONAL GRADING INFORMATION

Polish **EXCELLENT**
Symmetry **EXCELLENT**
Fluorescence **NONE**
Inscription(s) **IGI LG764670835**

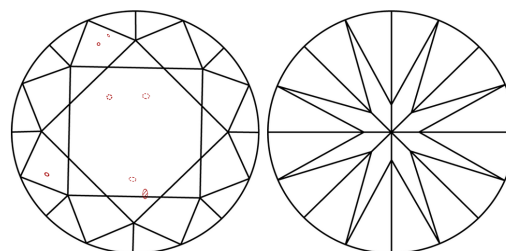
Comments: This Laboratory Grown Diamond was created by Chemical Vapor Deposition (CVD) growth process. Type IIa

PROPORTIONS



Sample Image Used

CLARITY CHARACTERISTICS



KEY TO SYMBOLS

Red symbols indicate internal characteristics.
Green symbols indicate external characteristics.

COLOR

D E F G H I J Faint Very Light Light

CLARITY

FL	IF	VS ¹⁻²	VS ¹⁻²	SI ¹⁻²	I ¹⁻³
Flawless	Internally Flawless	Very Very Slightly Included	Very Slightly Included	Slightly Included	Included

