



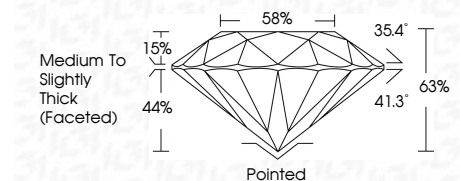
ELECTRONIC COPY

LG764670834
Report verification at igi.org



January 16, 2026
IGI Report Number **LG764670834**
Description **LABORATORY GROWN DIAMOND**
Shape and Cutting Style **ROUND BRILLIANT**
Measurements **6.40 - 6.42 X 4.04 MM**

GRADING RESULTS
Carat Weight **1.03 CARAT**
Color Grade **F**
Clarity Grade **VVS 2**
Cut Grade **EXCELLENT**



ADDITIONAL GRADING INFORMATION
Polish **EXCELLENT**
Symmetry **EXCELLENT**
Fluorescence **NONE**
Inscription(s) **IGI LG764670834**
Comments: This Laboratory Grown Diamond was created by Chemical Vapor Deposition (CVD) growth process. Type IIa



January 16, 2026
IGI Report No LG764670834
ROUND BRILLIANT
6.40 - 6.42 X 4.04 MM
1.03 CARAT
F
VVS 2
EXCELLENT
65%
66%
Medium To Slightly Thick (Faceted)
Pointed
EXCELLENT
EXCELLENT
NONE
IGI LG764670834
Comments: This Laboratory Grown Diamond was created by Chemical Vapor Deposition (CVD) growth process. Type IIa

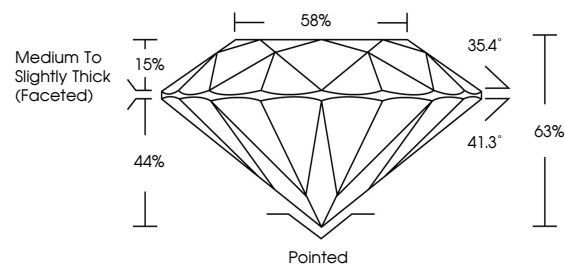
January 16, 2026
IGI Report Number **LG764670834**
Description **LABORATORY GROWN DIAMOND**
Shape and Cutting Style **ROUND BRILLIANT**
Measurements **6.40 - 6.42 X 4.04 MM**

GRADING RESULTS
Carat Weight **1.03 CARAT**
Color Grade **F**
Clarity Grade **VVS 2**
Cut Grade **EXCELLENT**

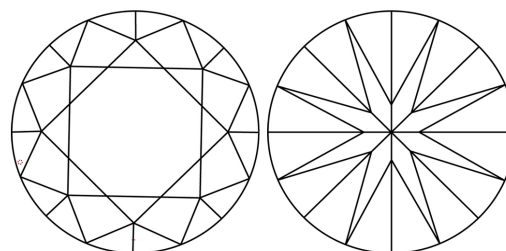
ADDITIONAL GRADING INFORMATION
Polish **EXCELLENT**
Symmetry **EXCELLENT**
Fluorescence **NONE**
Inscription(s) **IGI LG764670834**

Comments: This Laboratory Grown Diamond was created by Chemical Vapor Deposition (CVD) growth process. Type IIa

PROPORTIONS

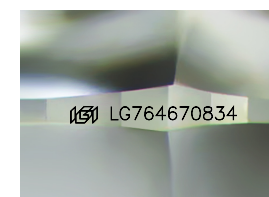


CLARITY CHARACTERISTICS



KEY TO SYMBOLS

Red symbols indicate internal characteristics.
Green symbols indicate external characteristics.



Sample Image Used

COLOR

D E F G H I J Faint Very Light Light

CLARITY

FL	IF	VVS ¹⁻²	VS ¹⁻²	SI ¹⁻²	I ¹⁻³
Flawless	Internally Flawless	Very Very Slightly Included	Very Slightly Included	Slightly Included	Included

