



INTERNATIONAL GEMOLOGICAL INSTITUTE

ELECTRONIC COPY



January 24, 2026

IGI Report Number **LG764670267**

HEART BRILLIANT

LABORATORY GROWN DIAMOND

4.91 X 5.32 X 3.28 MM

Carat Weight **0.50 CARAT**

Color Grade **FANCY VIVID BLUE**

Clarity Grade **SI 1**

Polish **VERY GOOD**

Symmetry **VERY GOOD**

Fluorescence **NONE**

Inscription(s) **IGI LG764670267**

Comments: This Laboratory Grown Diamond was created by Chemical Vapor Deposition (CVD) growth process. Indications of post-growth treatment.

LABORATORY GROWN DIAMOND REPORT

January 24, 2026

IGI Report Number

LG764670267

Description

LABORATORY GROWN DIAMOND

Shape and Cutting Style

HEART BRILLIANT

Measurements

4.91 X 5.32 X 3.28 MM

GRADING RESULTS

Carat Weight

0.50 CARAT

Color Grade

FANCY VIVID BLUE

Clarity Grade

SI 1

ADDITIONAL GRADING INFORMATION

Polish

VERY GOOD

Symmetry

VERY GOOD

Fluorescence

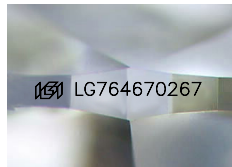
NONE

Inscription(s)

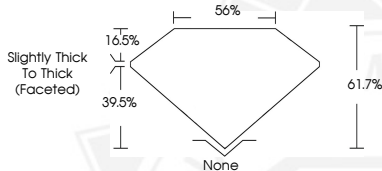
IGI LG764670267

Comments: This Laboratory Grown Diamond was created by Chemical Vapor Deposition (CVD) growth process.

Indications of post-growth treatment.



Sample Image Used



January 24, 2026

IGI Report Number **LG764670267**

HEART BRILLIANT

LABORATORY GROWN DIAMOND

4.91 X 5.32 X 3.28 MM

Carat Weight **0.50 CARAT**

Color Grade **FANCY VIVID BLUE**

Clarity Grade **SI 1**

Polish **VERY GOOD**

Symmetry **VERY GOOD**

Fluorescence **NONE**

Inscription(s) **IGI LG764670267**

Comments: This Laboratory Grown Diamond was created by Chemical Vapor Deposition (CVD) growth process. Indications of post-growth treatment.



THIS DOCUMENT WAS PRODUCED WITH THE FOLLOWING SECURITY MEASURES: SPECIAL DOCUMENT PAPER, INK SCREENS, WATERMARK, BACKGROUND DESIGNS, HOLOGRAM AND OTHER SECURITY FEATURES NOT LISTED AND DO EXCEED DOCUMENT SECURITY INDUSTRY GUIDELINES.

For terms & conditions and to verify this report, please visit www.igi.org