



January 24, 2026

IGI Report Number **LG764670252**

**PRINCESS CUT
LABORATORY GROWN DIAMOND**

4.40 X 4.26 X 2.88 MM
Carat Weight **0.49 CARAT**
Color Grade **FANCY DEEP GREEN**
Clarity Grade **VS 1**
Polish **VERY GOOD**
Symmetry **VERY GOOD**
Fluorescence **NONE**
Inscription(s) **IGI LG764670252**

Comments: This Laboratory Grown Diamond was created by Chemical Vapor Deposition (CVD) growth process. Indications of post-growth treatment.

LABORATORY GROWN DIAMOND REPORT

January 24, 2026

IGI Report Number

LG764670252

Description

LABORATORY GROWN DIAMOND

Shape and Cutting Style

PRINCESS CUT

Measurements

4.40 X 4.26 X 2.88 MM

GRADING RESULTS

Carat Weight

0.49 CARAT

Color Grade

FANCY DEEP GREEN

Clarity Grade

VS 1

ADDITIONAL GRADING INFORMATION

Polish

VERY GOOD

Symmetry

VERY GOOD

Fluorescence

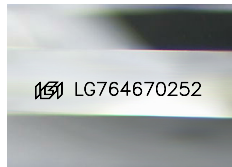
NONE

Inscription(s)

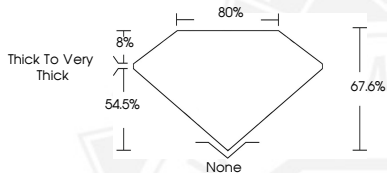
IGI LG764670252

Comments: This Laboratory Grown Diamond was created by Chemical Vapor Deposition (CVD) growth process.

Indications of post-growth treatment.



Sample Image Used



January 24, 2026

IGI Report Number **LG764670252**

**PRINCESS CUT
LABORATORY GROWN DIAMOND**

4.40 X 4.26 X 2.88 MM
Carat Weight **0.49 CARAT**
Color Grade **FANCY DEEP GREEN**
Clarity Grade **VS 1**
Polish **VERY GOOD**
Symmetry **VERY GOOD**
Fluorescence **NONE**
Inscription(s) **IGI LG764670252**

Comments: This Laboratory Grown Diamond was created by Chemical Vapor Deposition (CVD) growth process. Indications of post-growth treatment.



THIS DOCUMENT WAS PRODUCED WITH THE FOLLOWING SECURITY MEASURES: SPECIAL DOCUMENT PAPER, INK SCREENS, WATERMARK, BACKGROUND DESIGNS, HOLOGRAM AND OTHER SECURITY FEATURES NOT LISTED AND DO EXCEED DOCUMENT SECURITY INDUSTRY GUIDELINES.