



January 27, 2026

**IGI Report Number LG764670242**  
**RECTANGULAR PRINCESS CUT**  
**LABORATORY GROWN DIAMOND**  
**5.00 X 4.45 X 3.42 MM**

Carat Weight **0.68 CARAT**  
Color Grade **FANCY DEEP GREEN**  
Clarity Grade **VS 1**  
Polish **VERY GOOD**  
Symmetry **VERY GOOD**  
Fluorescence **NONE**  
Inscription(s) **IGI LG764670242**

Comments: This Laboratory Grown Diamond was created by Chemical Vapor Deposition (CVD) growth process. Indications of post-growth treatment.

**LABORATORY GROWN DIAMOND REPORT**

January 27, 2026

IGI Report Number

**LG764670242**

Description

**LABORATORY GROWN DIAMOND**

Shape and Cutting Style

**RECTANGULAR PRINCESS CUT**

Measurements

**5.00 X 4.45 X 3.42 MM**

**GRADING RESULTS**

Carat Weight

**0.68 CARAT**

Color Grade

**FANCY DEEP GREEN**

Clarity Grade

**VS 1**

**ADDITIONAL GRADING INFORMATION**

Polish

**VERY GOOD**

Symmetry

**VERY GOOD**

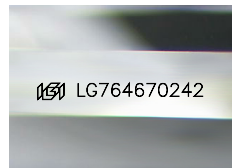
Fluorescence

**NONE**

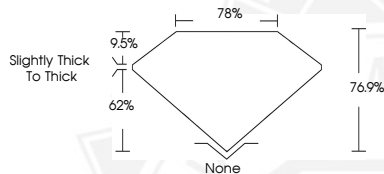
Inscription(s)

**IGI LG764670242**

Comments: This Laboratory Grown Diamond was created by Chemical Vapor Deposition (CVD) growth process. Indications of post-growth treatment.



Sample Image Used



January 27, 2026

**IGI Report Number LG764670242**  
**RECTANGULAR PRINCESS CUT**  
**LABORATORY GROWN DIAMOND**  
**5.00 X 4.45 X 3.42 MM**

Carat Weight **0.68 CARAT**  
Color Grade **FANCY DEEP GREEN**  
Clarity Grade **VS 1**  
Polish **VERY GOOD**  
Symmetry **VERY GOOD**  
Fluorescence **NONE**  
Inscription(s) **IGI LG764670242**

Comments: This Laboratory Grown Diamond was created by Chemical Vapor Deposition (CVD) growth process. Indications of post-growth treatment.



THIS DOCUMENT WAS PRODUCED WITH THE FOLLOWING SECURITY MEASURES: SPECIAL DOCUMENT PAPER, INK SCREENS, WATERMARK, BACKGROUND DESIGNS, HOLOGRAM AND OTHER SECURITY FEATURES NOT LISTED AND DO EXCEED DOCUMENT SECURITY INDUSTRY GUIDELINES.