



# INTERNATIONAL GEMOLOGICAL INSTITUTE

## LABORATORY GROWN DIAMOND REPORT

January 12, 2026  
IGI Report Number **LG764669869**  
Description **LABORATORY GROWN DIAMOND**  
Shape and Cutting Style **PRINCESS CUT**  
Measurements **5.29 X 5.28 X 3.72 MM**

### GRADING RESULTS

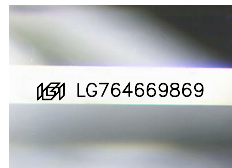
Carat Weight **0.92 CARAT**  
Color Grade **E**  
Clarity Grade **VVS 2**

### ADDITIONAL GRADING INFORMATION

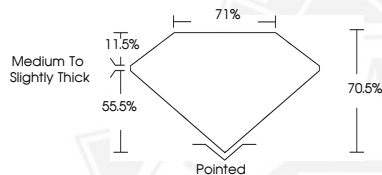
Polish **EXCELLENT**  
Symmetry **EXCELLENT**  
Fluorescence **NONE**  
Inscription(s) **IGI LG764669869**

Comments: This Laboratory Grown Diamond was created by Chemical Vapor Deposition (CVD) growth process.  
Type IIa

ELECTRONIC COPY



Sample Image Used



January 12, 2026  
IGI Report Number **LG764669869**  
**PRINCESS CUT**  
**LABORATORY GROWN DIAMOND**  
**5.29 X 5.28 X 3.72 MM**  
Carat Weight **0.92 CARAT**  
Color Grade **E**  
Clarity Grade **VVS 2**  
Polish **EXCELLENT**  
Symmetry **EXCELLENT**  
Fluorescence **NONE**  
Inscription(s) **IGI LG764669869**  
Comments: This Laboratory Grown Diamond was created by Chemical Vapor Deposition (CVD) growth process. Type IIa



January 12, 2026  
IGI Report Number **LG764669869**  
**PRINCESS CUT**  
**LABORATORY GROWN DIAMOND**  
**5.29 X 5.28 X 3.72 MM**  
Carat Weight **0.92 CARAT**  
Color Grade **E**  
Clarity Grade **VVS 2**  
Polish **EXCELLENT**  
Symmetry **EXCELLENT**  
Fluorescence **NONE**  
Inscription(s) **IGI LG764669869**  
Comments: This Laboratory Grown Diamond was created by Chemical Vapor Deposition (CVD) growth process. Type IIa



THIS DOCUMENT WAS PRODUCED WITH THE FOLLOWING SECURITY MEASURES: SPECIAL DOCUMENT PAPER, INK SCREENS, WATERMARK, BACKGROUND DESIGNS, HOLOGRAM AND OTHER SECURITY FEATURES NOT LISTED AND DO EXCEED DOCUMENT SECURITY INDUSTRY GUIDELINES.

For terms & conditions and to verify this report, please visit [www.igi.org](http://www.igi.org)