

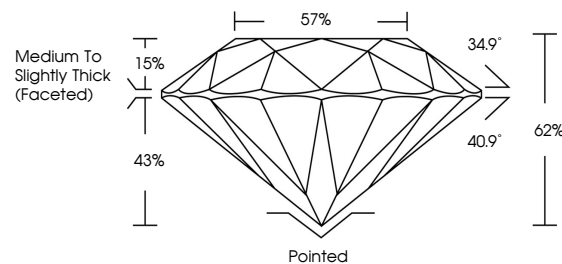


ELECTRONIC COPY

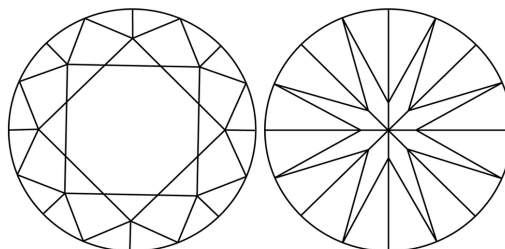
LABORATORY GROWN DIAMOND REPORT

LG764669250
Report verification at igi.org

PROPORTIONS

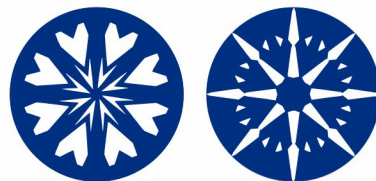


CLARITY CHARACTERISTICS



KEY TO SYMBOLS

Red symbols indicate internal characteristics.
Green symbols indicate external characteristics.

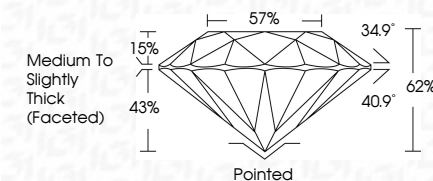


www.igi.org

LABORATORY GROWN DIAMOND REPORT



January 8, 2026	
IGI Report Number	LG764669250
Description	LABORATORY GROWN DIAMOND
Shape and Cutting Style	ROUND BRILLIANT
Measurements	8.60 - 8.66 X 5.35 MM
GRADING RESULTS	
Carat Weight	2.45 CARATS
Color Grade	D
Clarity Grade	INTERNALLY FLAWLESS
Cut Grade	IDEAL



ADDITIONAL GRADING INFORMATION

Polish	EXCELLENT
Symmetry	EXCELLENT
Fluorescence	NONE
Inscription(s)	IGI LG764669250
Comments: HEARTS & ARROWS	
As Grown - No indication of post-growth treatment.	
This Laboratory Grown Diamond was created by High Pressure High Temperature (HPHT) growth process.	
Type II	



IG

© IGI 2020, International Gemological Institute

FD - 10 20



THIS DOCUMENT WAS PRODUCED WITH THE FOLLOWING SECURITY MEASURES: SPECIAL DOCUMENT PAPER, INK SCREENS, WATERMARK, BACKGROUND DESIGNS, HOLOGRAM AND OTHER SECURITY FEATURES NOT LISTED AND DO EXCEED DOCUMENT SECURITY INDUSTRY GUIDELINES

January 8, 2026	2.45 CARATS
G Report No L974669280	D
ROUND BRILLIANT	IF
	IDEAL
	62%
	57%
	Medium to slightly Thick (fingert)
	Pointed
	EXCELLENT
	EXCELLENT
	NONE
	#81 L974669280
6.50 - 6.65 X 5.35 MM	
Color Weight	
Color Grade	
	Clarity Grade
	Cut Grade
	Depth
	Table
	Girdle
	Culet
	Polish
	Symmetry
	Fluorescence
	Inscription(s)
Comments:	
GRADING REPORTS	
As Grown - No indication of post-growth treatment.	
This Laboratory Grown Diamond was created by High Pressure High Temperature (HPHT) growth process.	