



ELECTRONIC COPY

LABORATORY GROWN DIAMOND REPORT

LG764667827
Report verification at igi.org

LABORATORY GROWN DIAMOND REPORT



January 13, 2026

IGI Report Number **LG764667827**

Description	LABORATORY GROWN DIAMOND
-------------	--------------------------

Shape and Cutting Style **ROUND BRILLIANT**

Measurements 6.44 - 6.47 X 3.94 MM

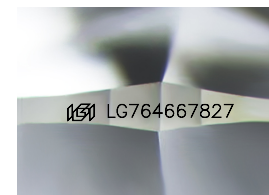
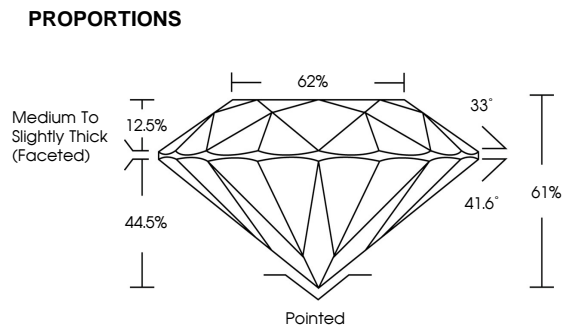
GRADING RESULTS

Carat Weight 1.01 CARAT

Color Grade

Clarity Grade VS 1

Cut Grade **EXCELLENT**



Sample Image Used

COLOR

D E F G H I J Faint Very Light Light

CLARITY

FL IF WS¹⁻² VS¹⁻² S¹⁻² |¹⁻³

Flawless	Internally Flawless	Very Very Slightly Included	Very Slightly Included	Slightly Included	Included
----------	---------------------	-----------------------------	------------------------	-------------------	----------

ADDITIONAL GRADING INFORMATION

Polish **EXCELLENT**Symmetry **EXCELLENT**Fluorescence **NONE**Inscription(s) LG764667827

Comments: This Laboratory Grown Diamond was created by Chemical Vapor Deposition (CVD) growth process.
Type IIa



© IGI 2020, International Gemological Institute

FD - 10 20

www.igi.org



THIS DOCUMENT WAS PRODUCED WITH THE FOLLOWING SECURITY MEASURES: SPECIAL DOCUMENT PAPER, INK SCREENS, WATERMARK BACKGROUND DESIGNS, HOLOGRAM AND OTHER SECURITY FEATURES NOT LISTED AND DO EXCEED DOCUMENT SECURITY INDUSTRY GUIDELINES

January 13, 2026
GI Report No LG764667827
ROUND BRILLIANT

Carat Weight	1.01 CARAT
Color Grade	D
Cut Grade	V8 1
Clarity Grade	EXCELLENT
Depth	61%
Table	62%
Girdle	Medium to Slightly Thick (Faceted)
Culet	Pointed
Polish	EXCELLENT
Symmetry	EXCELLENT
Fluorescence	NONE

Comments:
This Laboratory Grown Diamond was
created by Chemical Vapor Deposition
(CVD) growth process.