



**ELECTRONIC COPY**

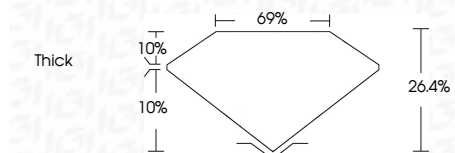
LG764665354  
Report verification at igi.org



January 20, 2026  
IGI Report Number **LG764665354**  
Description **LABORATORY GROWN DIAMOND**  
Shape and Cutting Style **LOZENGE STEP CUT**  
Measurements **15.35 X 10.29 X 2.72 MM**

**GRADING RESULTS**

Carat Weight **3.01 CARATS**  
Color Grade **F**  
Clarity Grade **VVS 2**



**ADDITIONAL GRADING INFORMATION**

Polish **EXCELLENT**  
Symmetry **EXCELLENT**  
Fluorescence **NONE**  
Inscription(s) **IGI LG764665354**  
Comments: This Laboratory Grown Diamond was created by Chemical Vapor Deposition (CVD) growth process. Type IIa



January 20, 2026  
IGI Report No LG764665354  
**LOZENGE STEP CUT**  
15.35 X 10.29 X 2.72 MM  
3.01 CARATS  
F  
VVS 2  
26.4%  
69%  
Thick  
EXCELLENT  
EXCELLENT  
NONE  
IGI LG764665354  
Comments: This Laboratory Grown Diamond was created by Chemical Vapor Deposition (CVD) growth process. Type IIa

**LABORATORY GROWN DIAMOND REPORT**

January 20, 2026  
IGI Report Number **LG764665354**  
Description **LABORATORY GROWN DIAMOND**  
Shape and Cutting Style **LOZENGE STEP CUT**  
Measurements **15.35 X 10.29 X 2.72 MM**

**GRADING RESULTS**

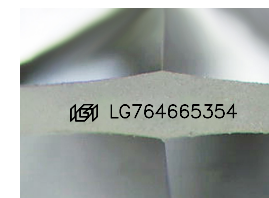
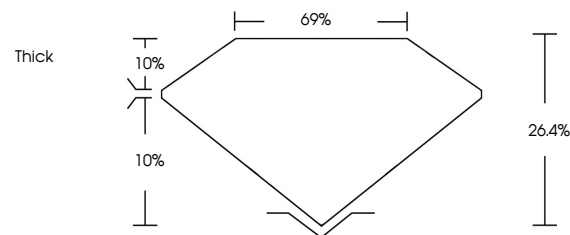
Carat Weight **3.01 CARATS**  
Color Grade **F**  
Clarity Grade **VVS 2**

**ADDITIONAL GRADING INFORMATION**

Polish **EXCELLENT**  
Symmetry **EXCELLENT**  
Fluorescence **NONE**  
Inscription(s) **IGI LG764665354**

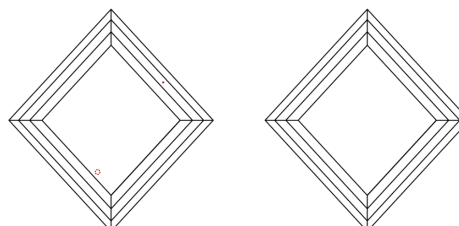
Comments: This Laboratory Grown Diamond was created by Chemical Vapor Deposition (CVD) growth process. Type IIa

**PROPORTIONS**



Sample Image Used

**CLARITY CHARACTERISTICS**



**KEY TO SYMBOLS**

Red symbols indicate internal characteristics.  
Green symbols indicate external characteristics.

**COLOR**

D E F G H I J Faint Very Light Light

**CLARITY**

FL	IF	VVS <sup>1-2</sup>	VS <sup>1-2</sup>	SI <sup>1-2</sup>	I <sup>1-3</sup>
Flawless	Internally Flawless	Very Very Slightly Included	Very Slightly Included	Slightly Included	Included

