



ELECTRONIC COPY

LG764663685
Report verification at igi.org



January 15, 2026

IGI Report Number **LG764663685**

Description **LABORATORY GROWN DIAMOND**

Shape and Cutting Style **ROUND BRILLIANT**

Measurements **7.36 - 7.39 X 4.57 MM**

GRADING RESULTS

Carat Weight **1.54 CARAT**

Color Grade **D**

Clarity Grade **VS 2**

Cut Grade **IDEAL**

January 15, 2026

IGI Report Number **LG764663685**

Description **LABORATORY GROWN DIAMOND**

Shape and Cutting Style **ROUND BRILLIANT**

Measurements **7.36 - 7.39 X 4.57 MM**

GRADING RESULTS

Carat Weight **1.54 CARAT**

Color Grade **D**

Clarity Grade **VS 2**

Cut Grade **IDEAL**

ADDITIONAL GRADING INFORMATION

Polish **EXCELLENT**

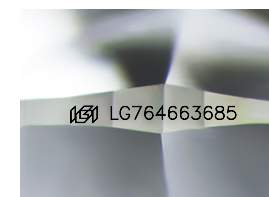
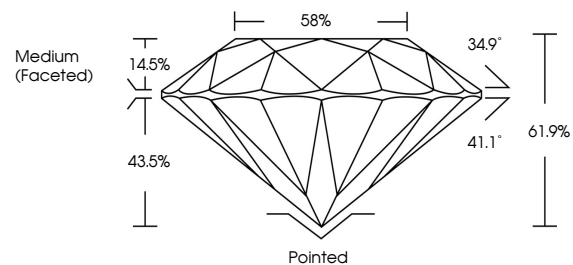
Symmetry **EXCELLENT**

Fluorescence **NONE**

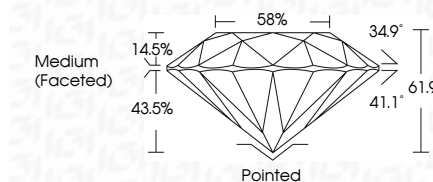
Inscription(s) **LG764663685**

Comments: This Laboratory Grown Diamond was created by Chemical Vapor Deposition (CVD) growth process. Type IIa

PROPORTIONS



Sample Image Used



COLOR

D E F G H I J Faint Very Light Light

CLARITY

FL	IF	VS ¹⁻²	VS ¹⁻²	SI ¹⁻²	I ¹⁻³
Flawless	Internally Flawless	Very Very Slightly Included	Very Slightly Included	Slightly Included	Included

ADDITIONAL GRADING INFORMATION

Polish **EXCELLENT**

Symmetry **EXCELLENT**

Fluorescence **NONE**

Inscription(s) **LG764663685**

Comments: This Laboratory Grown Diamond was created by Chemical Vapor Deposition (CVD) growth process. Type IIa



IGI



January 15, 2026
IGI Report No LG764663685
ROUND BRILLIANT

1.54 CARAT
D

7.36 - 7.39 X 4.57 MM
Color Grade
VS 2
Depth 61.9%
Table 14.5%
Girdle 43.5%
Medium (Faceted)

Pointed
EXCELLENT
EXCELLENT
NONE
NONE
IGI LG764663685

Comments: This Laboratory Grown Diamond was created by Chemical Vapor Deposition (CVD) growth process. Type IIa